

County : Montgomery
AUN Number : 123466403
LEA Type : SD

LEA Name : Pottstown SD
Address : 230 Beech St
Pottstown , PA 19464

Annual Financial Report Accuracy Certification Statement

For Fiscal Year Ending
6/30/2021


Pennsylvania Department of Education

&

Office of Comptroller Operations

PDE-2056: Intermediate Unit
PDE-2057: School District, AVTS/CTC, Charter School,
and Special Program Jointure

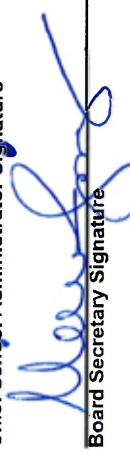
CERTIFICATION: By signing this page I agree that the electronic data submitted is a complete and accurate statement of the financial operations and status of the local education agency for the fiscal year. It has been prepared in accordance with generally accepted accounting principles and established Commonwealth of PA reporting guidelines.



Chief School Administrator Signature

12-21-21

Date



Board Secretary Signature

12/22/21

Date

Maureen K Jampo

Contact Person

(484)942-2902

Ext :

Contact Person Telephone Number

mjampo@pottstownk12.org

Contact Person E-mail Address

(610)326-6540

Contact Person Fax Number

Audit Certification

Annual Financial Report:

For Fiscal Year Ending 6/30/2021

(Pursuant to PA School Code Section 218(b))

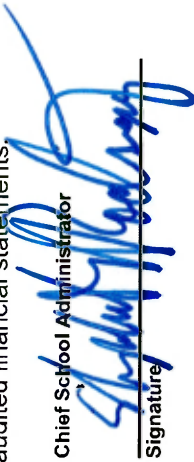
LEA Name : Pottstown SD
AUN Number : 123466403
County : Montgomery

Audit Certification Due:
12/31/2021

This certification is applicable to the Annual Financial Report data submitted through the Consolidated Financial Reporting System (CFRS).

CERTIFICATION: By signing this page I agree that the financial statements of the school have been properly audited as noted above pursuant to Article XXIV, and in the auditor's professional opinion, the Annual Financial Report (PDE-2057) submitted through CFRS is materially consistent with the audited financial statements.

Chief School Administrator


Signature

12-22-21
Date

Board Secretary


Signature

12/22/21
Date

Maureen K Jampo

Contact Person

mjampo@pottstownk12.org

Contact Person E-mail Address

(484)942-2902

Contact Person Telephone Number

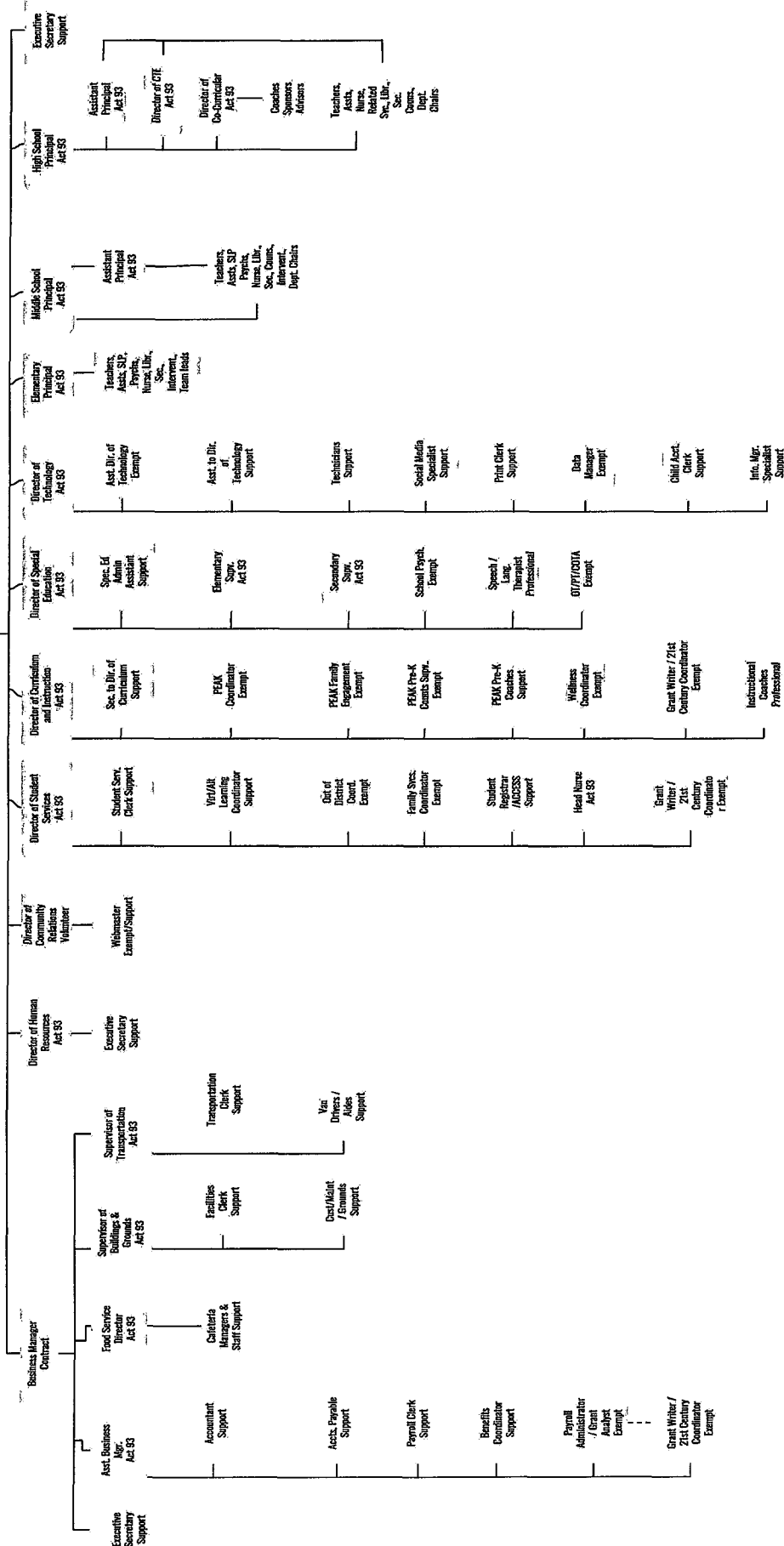
(610)326-6540

Contact Person Fax Number

Ext :

9-Member School Board

Superintendent Contract



Pottstown School District - March 15, 2018



Book: Policy Manual
Section: 600 Finances
Title: Capital Assets / GASB Statement 34
Code: 622
Status: For Board Approval
Adopted: March 15, 2018
Last revised: December 17, 2020

Purpose

The Board recognizes the need to implement the required accounting and financial reporting standards stipulated by the Pennsylvania Department of Education.

The primary objectives of implementing the Governmental Accounting Standards Board (GASB) Statement 34 are to assure compliance with state requirements, and properly account for both the financial and economic resources of the district.

Definition

This policy applies to the district's acquisition and depreciation of capital assets. **Capital assets** include land, improvements to land, easements, buildings and building additions, building improvements, furniture, fixtures and equipment, equipment under lease, vehicles, works of art and historical treasures, construction-in-progress, and infrastructure. **Capital assets** are tangible assets used in operations and have initial useful lives extending beyond a single reporting period. Equipment will not change its original shape, appearance or character with use and it can be expected to last more than one (1) year with reasonable care and maintenance.

Authority

Participation of the school district in any such activity shall be in accordance with Board policy.[\[1\]](#)[\[2\]](#)

Delegation of Responsibility

The responsibility to coordinate the compilation and preparation of all information necessary to implement this policy is delegated to the Superintendent, Business Administrator or their designee.

They should be responsible for implementing the necessary procedures to establish and maintain a capital asset inventory, including depreciation schedules. The basis for depreciation, including groups of assets and useful lives, shall be in writing and submitted for review to the Board.

The Superintendent or designee shall prepare the required Management Discussion and Analysis (MD&A). MD&A shall be in the form required by GASB Statement 34.

The district's independent auditors shall review the MD&A, in accordance with SAS No. 52, "Required Supplementary Information".

Guidelines

Capital Asset Addition Overview

Purchased capital assets greater than \$5,000 should be recorded at historical/original cost. The cost of a capital asset should include capitalized interest and ancillary charges necessary to place the asset into its intended location and condition for use. Ancillary charges include costs that are directly attributable to asset acquisition, such as freight and transportation charges, site preparation costs, and professional fees.

Capital assets should be depreciated over their useful lives as

determined for each asset class. Land, and some land improvements, are considered inexhaustible, and are therefore not subject to depreciation.

Donations

Donated capital assets must be reported at fair market value plus ancillary charges, if any, at the time of donation. Donated assets are depreciated over their useful lives, as determined for each asset class. If determining historical costs is not practical due to inadequate records, reporting should be based on estimates of fair market value at the date of donation.

Depreciation

Depreciation is required for the district's capital assets. Depreciation is calculated using the straight line method. The district calculates depreciation on all capital assets reported in the district financial statements other than land and construction-in-progress.

Disposals

Sale of Capital Assets - When capital assets are sold, calculation of gain or loss on disposal is required. The calculation is based upon the amount of proceeds received less the net book value (cost less accumulated depreciation taken on the asset).

Trade-ins – The value given for a trade is part of the cost of the newly acquired asset. The costs and accumulated depreciation of the traded-in asset must be removed from the books. Any gain or loss resulting from the disposition of the asset will be recognized as a gain or loss on disposal.

Assets Acquired by Capital Lease

Assets acquired by capital lease are recorded at the net present value of the future minimum lease payments. A corresponding liability is established at this time. Assets acquired under the terms of capital leases are depreciated over the useful lives designated for the asset class.

Legal

1. 24 P.S. 218

2. 24 P.S. 613

Governmental Accounting Standards Board, Statement No. 34

Last Modified by Joanne Rhoads on April 18, 2018

<u>Val Number</u>	<u>Description</u>	<u>Justification</u>
16230	<p>REP Fund 51 – Net Position - Beginning of Fiscal Year must equal Prior Year AFR, Net Position - End of Year. Justifications to this error must fully explain the situation that prompted a fund balance restatement. "Auditor Adjustment" is not a sufficient justification.</p> <p>REP Fund 51 – Net Position - Beginning of Fiscal Year: \$-355,604.00 REP Fund 51, Prior Year AFR, Net Position - End of Year: \$-226,573.00</p>	<p>Difference of \$129,031 is beginning balance for OPEB liability in 2017-18 as a result of the implementation of GASB 75 in relation to Other Post Employment Benefits.</p>
41162	<p>Expenditure Detail, Salaries (Object 100) and Benefits (Object 200 series): Amounts must be entered for both Salaries and Benefits.</p> <p>Please verify following fund and function codes: Fund 10 Function 2540; Fund 10 Function 2719; Fund 10 Function 2720;</p>	<p>On 12/11/2020 District paid \$41.42 FICA for a Golden Sage employee under Function 2540. During fiscal year District paid PA UC unemployment reimbursements for transportation employees (Function 2719 and 2720) who were laid off.</p>
42420	<p>Expenditure Detail: Total current year 2700-513 expenditure varies from prior year by 10%. Correct the data or enter a justification.</p> <p>2700-513, AFR Exp Detail: \$994,937.27 2700-513, PY AFR Amount: \$1,547,374.34</p>	<p>Transportation costs decreased because students learned remotely for the first half of the school year.</p>
50280	<p>SOIN: Current Year AFR amount must equal Prior Year AFR amount.</p> <p>SOIN, Beg Bal, Gen Obl Bnds: \$44,796,894.82 PY Ending Bal, Gen Obl Bnds: \$44,796,895.00</p>	<p>Prior Year AFR GOB 2017 ending balance rounded up 0.18. GOB 2017 ending balance is \$0.00 at 6/30/2021.</p>
50430	<p>SESS - 2160 Social Work Services: SESS Schedule amounts for Special Education vary from prior year by 40% or more. Correct the data or enter a justification.</p> <p>SESS Schedule 2160: \$45,820.82 Prior Year SESS Schedule 2160: \$30,600.70</p>	<p>A social worker was hired April 2021 to support special education students who were moved back into the district's Edgewood Special Education Program.</p>

Amounts Expressed in Whole Dollars

	<u>General Fund</u> <u>(10)</u>	<u>Student Sponsored</u> <u>Activity Fund</u> <u>(21)</u>	<u>Public Purpose Trust</u> <u>(27)</u>	<u>Other Compt Approved</u> <u>(28)</u>	<u>Athletic / Activity</u> <u>(29)</u>
Assets And Deferred Outflows Of Resources					
Assets					
0100 Cash and Cash Equivalents	14,918,370				114,051
0110 Investments	9,789,425				
0120 Taxes Receivable	2,863,402				
0130 Due From Other Funds	756,340				
0141 Due From Other Governments	136,809				
0142 State Revenue Receivable	3,353,384				
0143 Federal Revenue Receivable	1,088,871				
0145 Other Intergovernmental Revenue Receivable					
0146 Due from Primary Government					
0147 Due from Component Unit					
0150 Other Receivables	87,907				
0170 Inventories	5,420				
0180 Prepaid Expenses (Expenditures)	27,571				
0190 Other Current Assets					
Total Assets	\$33,027,499				\$114,051
0910 Deferred Outflows of Resources					
Total Assets And Deferred Outflows Of Resources	\$33,027,499				\$114,051

Amounts Expressed in Whole Dollars	<u>Capital Reserve (690.</u> <u>1850)</u> <u>(31)</u>	<u>Capital Reserve (1431)</u> <u>(32)</u>	<u>Other Capital Projects</u> <u>Fund</u> <u>(39)</u>	<u>Debt Service</u> <u>(40)</u>	<u>Permanent</u> <u>(90)</u>
Assets And Deferred Outflows Of Resources					
Assets					
0100 Cash and Cash Equivalents			2,180,638		
0110 Investments					
0120 Taxes Receivable					
0130 Due From Other Funds			11,479		
0141 Due From Other Governments					
0142 State Revenue Receivable					
0143 Federal Revenue Receivable					
0145 Other Intergovernmental Revenue Receivable					
0146 Due from Primary Government					
0147 Due from Component Unit					
0150 Other Receivables					
0170 Inventories					
0180 Prepaid Expenses (Expenditures)					
0190 Other Current Assets					
Total Assets			\$2,192,117		
0910 Deferred Outflows of Resources					
Total Assets And Deferred Outflows Of Resources			\$2,192,117		

Amounts Expressed in Whole Dollars

Total Governmental Funds

Assets And Deferred Outflows Of Resources

Assets	
0100 Cash and Cash Equivalents	17,213,059
0110 Investments	9,789,425
0120 Taxes Receivable	2,863,402
0130 Due From Other Funds	767,819
0141 Due From Other Governments	136,809
0142 State Revenue Receivable	3,353,384
0143 Federal Revenue Receivable	1,088,871
0145 Other Intergovernmental Revenue Receivable	
0146 Due from Primary Government	
0147 Due from Component Unit	
0150 Other Receivables	87,907
0170 Inventories	5,420
0180 Prepaid Expenses (Expenditures)	27,571
0190 Other Current Assets	
Total Assets	\$35,333,667
0910 Deferred Outflows of Resources	
Total Assets And Deferred Outflows Of Resources	\$35,333,667

Amounts Expressed in Whole Dollars

	<u>General Fund</u> <u>(10)</u>	<u>Student Sponsored</u> <u>Activity Fund</u> <u>(21)</u>	<u>Public Purpose Trust</u> <u>(27)</u>	<u>Other Compt Approved</u> <u>(28)</u>	<u>Athletic / Activity</u> <u>(29)</u>
Liabilities And Deferred Inflows Of Resources And Fund Balances					
Liabilities					
0400 Due to Other Funds	2,040,240				
0411 Due to Other Governments					
0412 Due to Primary Government					
0413 Due to Component Unit					
0420 Accounts Payable	1,227,331				
0430 Contracts Payable					
0440 Current Portion of Long-Term Debt					
0450 Short-Term Payables	57,686				
0461 Accrued Salaries and Benefits	3,994,251				
0462 Payroll Deductions and Withholding	2,596,013				
0480 Unearned Revenues	349,868				
0490 Other Current Liabilities					
Total Liabilities	\$10,265,389				
0950 Deferred Inflows of Resources	2,585,745				
Fund Balances					
0810 Nonspendable Fund Balance					
0820 Restricted Fund Balance					114,051
0830 Committed Fund Balance	7,338,459				
0840 Assigned Fund Balance	1,707,479				
0850 Unassigned Fund Balance	11,130,427				
Total Fund Balances	\$20,176,365				\$114,051
Total Liabilities, Deferred Inflows Of Resources And Fund Balances	\$33,027,499				\$114,051

Amounts Expressed in Whole Dollars

<u>Capital Reserve (690.</u>	<u>Capital Reserve (1431)</u>	<u>Other Capital Projects</u>	<u>Debt Service</u>	<u>Permanent</u>
<u>1850)</u>	<u>(32)</u>	<u>Fund</u>	<u>(40)</u>	<u>(90)</u>
<u>(31)</u>		<u>(39)</u>		

Liabilities And Deferred Inflows Of Resources And Fund Balances

- Liabilities**
- 0400 Due to Other Funds
 - 0411 Due to Other Governments
 - 0412 Due to Primary Government
 - 0413 Due to Component Unit
 - 0420 Accounts Payable
 - 0430 Contracts Payable
 - 0440 Current Portion of Long-Term Debt
 - 0450 Short-Term Payables
 - 0461 Accrued Salaries and Benefits
 - 0462 Payroll Deductions and Withholding
 - 0480 Unearned Revenues
 - 0490 Other Current Liabilities

Total Liabilities

- 0950 Deferred Inflows of Resources

Fund Balances

- 0810 Nonspendable Fund Balance
- 0820 Restricted Fund Balance 2,192,117
- 0830 Committed Fund Balance
- 0840 Assigned Fund Balance
- 0850 Unassigned Fund Balance

Total Fund Balances \$2,192,117

Total Liabilities, Deferred Inflows Of Resources And Fund Balances \$2,192,117

Amounts Expressed in Whole Dollars

Total Governmental Funds

Liabilities And Deferred Inflows Of Resources And Fund Balances

Liabilities

0400 Due to Other Funds	2,040,240
0411 Due to Other Governments	
0412 Due to Primary Government	
0413 Due to Component Unit	
0420 Accounts Payable	1,227,331
0430 Contracts Payable	
0440 Current Portion of Long-Term Debt	
0450 Short-Term Payables	57,686
0461 Accrued Salaries and Benefits	3,994,251
0462 Payroll Deductions and Withholding	2,596,013
0480 Unearned Revenues	349,868
0490 Other Current Liabilities	

Total Liabilities \$10,265,389

0950 Deferred Inflows of Resources	2,585,745
------------------------------------	-----------

Fund Balances

0810 Nonspendable Fund Balance	
0820 Restricted Fund Balance	2,306,168
0830 Committed Fund Balance	7,338,459
0840 Assigned Fund Balance	1,707,479
0850 Unassigned Fund Balance	11,130,427

Total Fund Balances \$22,482,533

Total Liabilities, Deferred Inflows Of Resources And Fund Balances \$35,333,667

Amounts Expressed in Whole Dollars	<u>General Fund</u> <u>(10)</u>	<u>Student Sponsored</u> <u>Activity Fund</u> <u>(21)</u>	<u>Public Purpose Trust</u> <u>(27)</u>	<u>Other Compt Approved</u> <u>(28)</u>	<u>Athletic / Activity</u> <u>(29)</u>
Revenues					
6000 Revenue from Local Sources	35,795,407				8,265
7000 Revenue from State Sources	30,054,482				
8000 Revenue from Federal Sources	5,287,467				
Total Revenues	\$71,137,356				\$8,265
Expenditures					
1000 Instruction	40,633,421				
2000 Support Services	18,077,642				
3000 Operation of Non-Instructional Services	1,125,831				16,427
4000 Facilities Acquisition, Construction and Improvement Services	1,923,258				
5110 Debt Service	3,439,226				
5130 Refund of Prior Year Revenues / Receipts	91,672				
Total Expenditures	\$65,291,050				\$16,427
Excess (Deficiency) Of Revenues Over Expenditures	\$5,846,306				(\$8,162)
Other Financing Sources (Uses)					
9110 Face Value of Bonds Issued					
9120 Proceeds from Refunding of Bonds					
9130 Bond Premiums					
9200 Proceeds from Extended-Term Financing					
9300 Interfund Transfers - IN	51,032				
9400 Sale of or Compensation for Loss of Fixed Assets					
9710 Transfers from Component Units					
9720 Transfers from Primary Governments					
9910 Other Financing Sources Not Listed in the 9000 Series					
9990 Insurance Recoveries					
5120 Debt Service – Refunded Bonds					
5150 Bond Discounts					
5200 Interfund Transfers – Out					
5300 Transfers Out to Component Units/Primary Governments					
Total Other Financing Sources (Uses)	\$51,032				

Amounts Expressed in Whole Dollars	<u>Capital Reserve (690.1850)</u> <u>(31)</u>	<u>Capital Reserve (1431)</u> <u>(32)</u>	<u>Other Capital Projects</u> <u>Fund</u> <u>(39)</u>	<u>Debt Service</u> <u>(40)</u>	<u>Permanent</u> <u>(90)</u>
Revenues					
6000 Revenue from Local Sources			2,606		
7000 Revenue from State Sources					
8000 Revenue from Federal Sources					
Total Revenues			\$2,606		
Expenditures					
1000 Instruction					
2000 Support Services					
3000 Operation of Non-Instructional Services					
4000 Facilities Acquisition, Construction and Improvement Services					
5110 Debt Service				8,602	
5130 Refund of Prior Year Revenues / Receipts					
Total Expenditures				\$8,602	
Excess (Deficiency) Of Revenues Over Expenditures			\$2,606	(\$8,602)	
Other Financing Sources (Uses)					
9110 Face Value of Bonds Issued					
9120 Proceeds from Refunding of Bonds					
9130 Bond Premiums					
9200 Proceeds from Extended-Term Financing					
9300 Interfund Transfers - IN					
9400 Sale of or Compensation for Loss of Fixed Assets					
9710 Transfers from Component Units					
9720 Transfers from Primary Governments					
9910 Other Financing Sources Not Listed in the 9000 Series					
9990 Insurance Recoveries					
5120 Debt Service – Refunded Bonds					
5150 Bond Discounts					
5200 Interfund Transfers – Out					
5300 Transfers Out to Component Units/Primary Governments					
Total Other Financing Sources (Uses)					

Amounts Expressed in Whole Dollars	<u>Total Governmental Funds</u>
Revenues	
6000 Revenue from Local Sources	35,806,278
7000 Revenue from State Sources	30,054,482
8000 Revenue from Federal Sources	5,287,467
Total Revenues	\$71,148,227
Expenditures	
1000 Instruction	40,633,421
2000 Support Services	18,077,642
3000 Operation of Non-Instructional Services	1,142,258
4000 Facilities Acquisition, Construction and Improvement Services	1,923,258
5110 Debt Service	3,447,828
5130 Refund of Prior Year Revenues / Receipts	91,672
Total Expenditures	\$65,316,079
Excess (Deficiency) Of Revenues Over Expenditures	\$5,832,148
Other Financing Sources (Uses)	
9110 Face Value of Bonds Issued	
9120 Proceeds from Refunding of Bonds	
9130 Bond Premiums	
9200 Proceeds from Extended-Term Financing	
9300 Interfund Transfers - IN	51,032
9400 Sale of or Compensation for Loss of Fixed Assets	
9710 Transfers from Component Units	
9720 Transfers from Primary Governments	
9910 Other Financing Sources Not Listed in the 9000 Series	
9990 Insurance Recoveries	
5120 Debt Service – Refunded Bonds	
5150 Bond Discounts	
5200 Interfund Transfers – Out	
5300 Transfers Out to Component Units/Primary Governments	
Total Other Financing Sources (Uses)	\$51,032

Amounts Expressed in Whole Dollars	<u>General Fund</u> <u>(10)</u>	<u>Student Sponsored</u> <u>Activity Fund</u> <u>(21)</u>	<u>Public Purpose Trust</u> <u>(27)</u>	<u>Other Compt Approved</u> <u>(28)</u>	<u>Athletic / Activity</u> <u>(29)</u>
Special And Extraordinary Items					
9920 Special Items – Gains					
9930 Extraordinary Items – Gains					
5520 Special Items – Losses					
5530 Extraordinary Items – Losses					
Net Change In Fund Balances	\$5,897,338				(\$8,162)
Fund Balance					
0001 Fund Balance - Beginning of Fiscal Year	14,279,028				122,213
Fund Balance - End Of Year	\$20,176,366				\$114,051

Amounts Expressed in Whole Dollars	<u>Capital Reserve (690.</u> <u>1850)</u> <u>(31)</u>	<u>Capital Reserve (1431)</u> <u>(32)</u>	<u>Other Capital Projects</u> <u>Fund</u> <u>(39)</u>	<u>Debt Service</u> <u>(40)</u>	<u>Permanent</u> <u>(90)</u>
Special And Extraordinary Items					
9920 Special Items – Gains					
9930 Extraordinary Items – Gains					
5520 Special Items – Losses					
5530 Extraordinary Items – Losses					
Net Change In Fund Balances			\$2,606	(\$8,602)	
Fund Balance					
0001 Fund Balance - Beginning of Fiscal Year			2,189,511	8,602	
Fund Balance - End Of Year			\$2,192,117		

Amounts Expressed in Whole Dollars	<u>Total Governmental Funds</u>
Special And Extraordinary Items	
9920 Special Items – Gains	
9930 Extraordinary Items – Gains	
5520 Special Items – Losses	
5530 Extraordinary Items – Losses	
Net Change In Fund Balances	\$5,883,180
Fund Balance	
0001 Fund Balance - Beginning of Fiscal Year	16,599,354
Fund Balance - End Of Year	\$22,482,534

Amounts Expressed in Whole Dollars

	<u>Food Service</u> <u>(51)</u>	<u>Child Care</u> <u>Operations</u> <u>(52)</u>	<u>Other Enterprise</u> <u>(58)</u>	<u>TOTAL</u>	<u>Internal Service</u> <u>(60)</u>
Assets And Deferred Outflows Of Resources					
Current Assets					
0100 Cash and Cash Equivalents	1,017,379			1,017,379	
0110 Investments					3,329,374
0130 Due From Other Funds	4,835			4,835	1,532,920
0141 Due From Other Governments					
0142 State Revenue Receivable	1,718			1,718	
0143 Federal Revenue Receivable	43,562			43,562	
0146 Due from Primary Government					
0147 Due from Component Unit					
0150 Other Receivables	84			84	
0170 Inventories	24,747			24,747	
0180 Prepaid Expenses (Expenditures)	33,190			33,190	131,000
0190 Other Current Assets					
Total Current Assets	\$1,125,515			\$1,125,515	\$4,993,294
Noncurrent Assets					
0211 Land					
0212 Site Improvements (Net)					
0220 Buildings and Building Improvements (Net)					
0230 Machinery, Equipment and Furniture (Net)	62,203			62,203	
0250 Construction in Progress					
0260 Long Term Prepayments					
0290 Other Noncurrent Assets					
Total Noncurrent Assets	\$62,203			\$62,203	
0910 Deferred Outflows of Resources	420,761			420,761	
Total Assets And Deferred Outflows Of Resources	\$1,608,479			\$1,608,479	\$4,993,294

Amounts Expressed in Whole Dollars	<u>Food Service</u> <u>(51)</u>	<u>Child Care</u> <u>Operations</u> <u>(52)</u>	<u>Other Enterprise</u> <u>(58)</u>	<u>TOTAL</u>	<u>Internal Service</u> <u>(60)</u>
Liabilities And Deferred Inflows Of Resources And Net Position					
Current Liabilities					
0400 Due to Other Funds	265,334			265,334	
0411 Due to Other Governments					
0413 Due to Component Unit					
0420 Accounts Payable	11,030			11,030	
0430 Contracts Payable					
0440 Current Portion of Long-Term Debt					
0450 Short-Term Payables					
0461 Accrued Salaries and Benefits	37,010			37,010	
0462 Payroll Deductions and Withholding					
0480 Unearned Revenues	4,009			4,009	
0490 Other Current Liabilities					
Total Current Liabilities	\$317,383			\$317,383	
Noncurrent Liabilities					
0510 Bonds Payable					
0520 Extended-Term Financing Agreements Payable					
0530 Lease-Purchase Obligations					
0540 Accumulated Compensated Absences	21,136			21,136	
0550 Authority Lease Obligations					
0560 Other Post-Employment Benefits (OPEB)	237,990			237,990	
0570 Net Pension Liability	1,915,515			1,915,515	
0599 Other Noncurrent Liabilities					
Total Noncurrent Liabilities	\$2,174,641			\$2,174,641	
Total Liabilities	\$2,492,024			\$2,492,024	
0950 Deferred Inflows of Resources	115,667			115,667	
Net Position					
0791 Net Investment in Capital Assets					
0008 Restricted Net Position (0792 – 0798)					131,000
0799 Unrestricted Net Position	(999,212)			(999,212)	4,862,294
Total Net Position	(\$999,212)			(\$999,212)	\$4,993,294
Total Liabilities And Deferred Inflows Of Resources And Net Position	\$1,608,479			\$1,608,479	\$4,993,294

Amounts Expressed in Whole Dollars	<u>Food Service</u> <u>(51)</u>	<u>Child Care Operations</u> <u>(52)</u>	<u>Other Enterprise</u> <u>(58)</u>	<u>TOTAL</u>	<u>Internal Service</u> <u>(60)</u>
Operating Revenues					
6600 Food Service Revenue	14,114			14,114	
0071 Charges for Services					6,715,618
0072 Other Operating Revenue					
Total Operating Revenues	\$14,114			\$14,114	\$6,715,618
Operating Expenses					
100 Personnel Services – Salaries	293,804			293,804	
200 Personnel Services – Employee Benefits	428,216			428,216	5,320,463
300 Purchased Professional and Technical Services	433			433	
400 Purchased Property Services	32,886			32,886	
500 Other Purchased Services	1,442			1,442	
600 Supplies	740,819			740,819	
740 Depreciation	8,090			8,090	
810 Dues and Fees	726			726	239,474
880 Refunds of Prior Years' Receipts					
890 Miscellaneous Expenditures	1,670			1,670	
Total Operating Expenses	\$1,508,086			\$1,508,086	\$5,559,937
Operating Income (Loss)	(\$1,493,972)			(\$1,493,972)	\$1,155,681
Non Operating Revenues (Expenses)					
6500 Earnings on Investments	1,564			1,564	
6920 Contributions and Donations from Private Sources					
6930 Gains or Losses on Sale of Fixed Assets					
6991 Refunds of a Prior Year Expenditure					
7000 Revenue from State Sources	94,218			94,218	
8000 Revenue from Federal Sources	805,614			805,614	
9990 Insurance Recoveries					
820 Claims and Judgments Against the LEA					
830 Interest					
TOTAL Non Operating Revenues (Expenses)	\$901,396			\$901,396	
Income (Loss) Before Contributions And Transfers	(\$592,576)			(\$592,576)	\$1,155,681

Amounts Expressed in Whole Dollars	<u>Food Service</u> <u>(51)</u>	<u>Child Care Operations</u> <u>(52)</u>	<u>Other Enterprise</u> <u>(58)</u>	<u>TOTAL</u>	<u>Internal Service</u> <u>(60)</u>
Contributions, Transfers, and Special and Extraordinary Items					
5200 Interfund Transfers – Out	51,032			51,032	
5300 Transfers Out to Component Units/Primary Governments					
5520 Special Items – Losses					
5530 Extraordinary Items – Losses					
9300 Interfund Transfers - IN					
9500 Capital Contributions					
9700 Transfers IN From Component Units/Primary Governments					
9920 Special Items – Gains					
9930 Extraordinary Items – Gains					
Change In Net Position	(\$643,608)			(\$643,608)	\$1,155,681
0002 Net Position - Beginning of Fiscal Year	(355,604)			(355,604)	3,837,613
0003 Accounting Changes / Residual Equity Transfers					
Net Position - End Of Year	(\$999,212)			(\$999,212)	\$4,993,294

LEA : 123466403 Pottstown SD

Printed 12/22/2021 2:47:46 PM

Amounts Expressed in Whole Dollars	<u>Food Service</u> <u>(51)</u>	<u>Child Care Operations</u> <u>(52)</u>	<u>Other Enterprise</u> <u>(58)</u>	<u>TOTAL</u>	<u>Internal Service(60)</u>
Cash Flows From Operating Activities					
0011 Cash Receipts From Users	15,932			15,932	6,715,572
0012 Cash Receipts From Assessments Made to Other Funds					
0013 Cash Receipts From Earnings on Investments					
0014 Cash Receipts From Other Operating Revenue					
0015 Cash Payments To Employees For Services	616,474			616,474	
0016 Cash Payments For Insurance Claims					
0017 Cash Payments To Suppliers For Goods and Services	753,469			753,469	6,715,572
0018 Cash Payments For Other Operating Expenses					
Net Cash Provided By (Used For) Operating Activities	(\$1,354,011)			(\$1,354,011)	\$0
Cash Flows From Non-Capital Financing Activities					
0021 Receipts From Local Sources - 6000					
0022 Receipts From State Sources - 7000	93,930			93,930	
0023 Receipts From Federal Sources -8000	749,788			749,788	
0024 Notes and Loans Received (Repaid)					
0025 Interest Paid on Notes/Loans - 5100-830					
0026 Operating Transfers In (Out)/Residual Equity Trans	(947,896)			(947,896)	
0027 Operating Transfers In (Out) Primary Government / Comp Unit					
0028 Receipts From Refund of Prior Year Expenditures - 6991					
0029 Special and Extraordinary Gains (losses)					
0030 Receipts from Insurance Recoveries -9990					
Net Cash Prov By (Used for) Non-Capital Financing Activities	(\$104,178)			(\$104,178)	
Cash Flows From Capital and Related Financing Activities					
0031 Payments For Fac Acq, Const, and Imp - 4000					
0032 Gain / (Loss) on Sale of Fixed Assets - 6930					
0033 Proceeds From Extended Term Financing - 9200					
0034 Principal Paid on Financing Agreements					
0035 Interest Paid on Financing Agreements - 5100-830					
0036 (Inc) Dec in Contributed Capital					
Net Cash Prov By (Used for) Capital and Related Financing Activities					
Cash Flows From Investing Activities					
0041 Earnings on Investments - 6500	1,564			1,564	
0042 Purchase of Inv Securities / Deposits to Inv Pools					
0043 Receipts From Investment Pool Withdrawals					
0044 Proceeds from Sale and Maturity of Inv Securities					

LEA : 123466403 Pottstown SD

Printed 12/22/2021 2:47:46 PM

0045 Loans Received (Paid)

Net Cash Prov By (Used for) Investing Activities	\$1,564	\$1,564
---	----------------	----------------

	<u>Food Service</u> <u>(51)</u>	<u>Child Care Operations</u> <u>(52)</u>	<u>Other Enterprise</u> <u>(58)</u>	<u>TOTAL</u>	<u>Internal Service</u> <u>(60)</u>
Net Increase (Decrease) in Cash Flows	(1,456,625)			(1,456,625)	
0004 Cash and Cash Equivalents Beginning of Year	2,474,004			2,474,004	
Cash and Cash Equivalents at Year End	\$1,017,379			\$1,017,379	
<hr/>					
Reconciliation of Operating Income (Loss) To Net Cash Provided by (Used For) Operating Activities					
0005 Operating Income (Loss) per REP	(1,493,972)			(1,493,972)	1,155,681
Adjustments					
0051 Depreciation and Net Amortization	8,090			8,090	
0052 Provision for Uncollectible Accounts					
0053 Other Adjustments	46,236			46,236	
Effect of Changes in Assets, Liabilities, Deferred Outflows and Deferred Inflows					
0054 (Inc) Dec In Accounts Receivable (0120-0150)					
0055 Advances to Other Funds (0160)					
0056 (Inc) Dec in Inventories (0170)	3,675			3,675	
0057 (Inc) Dec in Prepaid Expenses (0180)	(33,190)			(33,190)	
0058 (Inc) Dec in Other Current or Noncurrent Assets	165			165	(1,155,681)
0064 Deferred Outflows (0910)	178,925			178,925	
0059 Inc (Dec) in Accounts Payable (0400-0450)	8,226			8,226	
0060 Inc (Dec) in Accrued Salaries/Benefits (0461)	8,620			8,620	
0065 Inc (Dec) in Net Pension Liabilities (0570)	(37,574)			(37,574)	
0066 Inc (Dec) in Other Postemp Benefit Oblig (0560)	(19,520)			(19,520)	
0061 Inc (Dec) in Payroll Deductions/Withholding (0462)					
0062 Inc (Dec) in Unearned Revenue (0480)	1,213			1,213	
0063 Inc (Dec) in Other Current or Noncurrent Liabilities	(361)			(361)	
0067 Deferred Inflows (0950)	(24,544)			(24,544)	
Total Adjustments	\$139,961			\$139,961	(\$1,155,681)
Cash Provided By (Used for) Total	(\$1,354,011)			(\$1,354,011)	

COMBINED STATEMENT OF CASH FLOWS
SCHEDULE OF NONCASH INVESTING, CAPITAL, AND FINANCING ACTIVITIES

Explanation of Transaction and Balance Sheet Effect	Amount
Total	

LEA : 123466403 Pottstown SD

Printed 12/22/2021 2:47:49 PM

Amounts Expressed in Whole Dollars	<u>Private Purpose Trust</u> <u>(71)</u>	<u>Investment Trust</u> <u>(72)</u>	<u>Pension Trust</u> <u>(73)</u>	<u>Student Activity Custodial</u> <u>(81)</u>
Assets And Deferred Outflows Of Resources				
Assets				
0100 Cash and Cash Equivalents	128,222			
0110 Investments				
0130 Due From Other Funds				
0140 Due from Other Governments, Primary Government and Component Units				
0150 Other Receivables				
0170 Inventories				
0180 Prepaid Expenses (Expenditures)				
0190 Other Current Assets				
0220 Buildings and Building Improvements (Net)				
0230 Machinery, Equipment and Furniture (Net)				
Total Assets	\$128,222			
0910 Deferred Outflows of Resources				
Total Assets And Deferred Outflows Of Resources	\$128,222			

LEA : 123466403 Pottstown SD

Printed 12/22/2021 2:47:49 PM

Amounts Expressed in Whole Dollars

Other Custodial Fiduciary Component Units Total Fiduciary Funds
(89) (98)

Assets And Deferred Outflows Of Resources

Assets		
0100 Cash and Cash Equivalents		128,222
0110 Investments		
0130 Due From Other Funds		
0140 Due from Other Governments, Primary Government and Component Units		
0150 Other Receivables		
0170 Inventories		
0180 Prepaid Expenses (Expenditures)		
0190 Other Current Assets		
0220 Buildings and Building Improvements (Net)		
0230 Machinery, Equipment and Furniture (Net)		
Total Assets		\$128,222
0910 Deferred Outflows of Resources		
Total Assets And Deferred Outflows Of Resources		\$128,222

LEA : 123466403 Pottstown SD

Printed 12/22/2021 2:47:49 PM

Amounts Expressed in Whole Dollars

Private Purpose Trust
(71)

Investment Trust
(72)

Pension Trust
(73)

Student Activity Custodial
(81)

Liabilities, Deferred Inflows Of Resources And Net Position

Liabilities

- 0400 Due to Other Funds
- 0410 Due to Other Governments, Primary Government and Component Units
- 0420 Accounts Payable
- 0430 Contracts Payable
- 0450 Short-Term Payables
- 0460 Payroll Accruals and Withholdings
- 0480 Unearned Revenues
- 0490 Other Current Liabilities

Total Liabilities

- 0950 Deferred Inflows of Resources

Net Position

- 0791 Net Investment in Capital Assets
- 0009 Restricted Net Position (0792 – 0798)
- 0799 Unrestricted Net Position

128,222

Total Net Position

\$128,222

Total Liabilities, Deferred Inflows Of Resources And Net Position

\$128,222

LEA : 123466403 Pottstown SD

Printed 12/22/2021 2:47:49 PM

Amounts Expressed in Whole Dollars	<u>Other Custodial</u> <u>(89)</u>	<u>Fiduciary Component Units</u> <u>(98)</u>	<u>Total Fiduciary Funds</u>
Liabilities, Deferred Inflows Of Resources And Net Position			
Liabilities			
0400 Due to Other Funds			
0410 Due to Other Governments, Primary Government and Component Units			
0420 Accounts Payable			
0430 Contracts Payable			
0450 Short-Term Payables			
0460 Payroll Accruals and Withholdings			
0480 Unearned Revenues			
0490 Other Current Liabilities			
Total Liabilities			
0950 Deferred Inflows of Resources			
Net Position			
0791 Net Investment in Capital Assets			
0009 Restricted Net Position (0792 – 0798)			
0799 Unrestricted Net Position			128,222
Total Net Position			\$128,222
Total Liabilities, Deferred Inflows Of Resources And Net Position			\$128,222

Amounts Expressed in Whole Dollars	<u>Private Purpose Trust</u> <u>(71)</u>	<u>Investment Trust</u> <u>(72)</u>	<u>Pension Trust</u> <u>(73)</u>	<u>Student Activity</u> <u>Custodial</u> <u>(81)</u>	<u>Other Custodial</u> <u>(89)</u>	<u>Fiduciary Component</u> <u>Units</u> <u>(98)</u>
Additions						
0091 Gifts and Contributions	51,408					
0095 Net Investment Earnings	365					
0092 Other Additions						
Deductions						
0093 Scholarships Awarded						
0094 Other Deductions	7,767					
Change In Net Position	\$44,006					
0006 Net Position – Beginning of Fiscal Year	84,216					
0007 Net Position Held in Trust for Pension Benefits						
Net Position - End of Fiscal Year	\$128,222					

Amounts Expressed in Whole Dollars	<u>Total Fiduciary Funds</u>
Additions	
0091 Gifts and Contributions	51,408
0095 Net Investment Earnings	365
0092 Other Additions	
Deductions	
0093 Scholarships Awarded	
0094 Other Deductions	7,767
Change In Net Position	\$44,006
0006 Net Position – Beginning of Fiscal Year	84,216
0007 Net Position Held in Trust for Pension Benefits	
Net Position - End of Fiscal Year	\$128,222

	<u>Revenue Reported In Current Year</u>	<u>Current Year Tax Accrual</u>	<u>Prior Year Tax Accrual</u>	<u>Taxes Collected In Current Year</u>
<u>Revenue from Local Sources</u>				
6111 Current Real Estate Taxes	29,021,452.35			29,021,452.35
6112 Interim Real Estate Taxes	34,744.11			34,744.11
6113 Public Utility Realty Taxes	32,038.51			32,038.51
6114 Payments in Lieu of Current Taxes - State / Local	41,701.84			41,701.84
6120 Current Per Capita Taxes, Section 679	34,477.65			34,477.65
6141 Current Act 511 Per Capita Taxes	34,477.65			34,477.65
6143 Current Act 511 Local Services Taxes	39,790.59			39,790.59
6151 Current Act 511 Earned Income Taxes	2,304,627.11			2,304,627.11
6152 Current Act 511 Occupation Taxes	171,872.26			171,872.26
6153 Current Act 511 Real Estate Transfer Taxes	544,064.84			544,064.84
6411 Delinquent Real Estate Taxes	1,229,878.31			1,229,878.31
6420 Delinquent Per Capita Taxes, Section 679	24,230.16			24,230.16
6440 Delinquent Local Enabling Taxes - Flat Rate Assessments	24,230.16			24,230.16
6452 Delinquent Act 511 Occupation Taxes	187,467.99			187,467.99
6500 Earnings on Investments	31,009.27			
6832 Federal IDEA Revenue Received as Pass Through	756,839.30			
6839 Federal Revenue Received from Other Sources	8,296.51			
6910 Rentals	103,764.04			
6920 Contributions and Donations from Private Sources	363,460.98			
6991 Refunds of a Prior Year Expenditure	244,703.30			
6999 Other Revenues Not Specified Above	562,279.73			
TOTAL Revenue from Local Sources	\$35,795,406.66			\$33,725,053.53

**Revenue Reported
In Current Year**

Revenue from State Sources

7111 Basic Education Funding-Formula	12,144,111.52		
7112 Basic Education Funding-Social Security	1,114,655.21		
7160 Tuition for Orphans Subsidy	5,063.09		
7220 Vocational Education	475,439.42		
7271 Special Education funds for School-Aged Pupils	2,437,564.08		
7292 Pre-K Counts	2,467,500.00		
7311 Pupil Transportation Subsidy	380,285.32		
7312 Nonpublic and Charter School Pupil Transportation Subsidy	10,780.00		
7320 Rental and Sinking Fund Payments / Building Reimbursement Subsidy	1,180,188.29		
7330 Health Services (Medical, Dental, Nurse, Act 25)	62,315.86		
7340 State Property Tax Reduction Allocation	1,623,904.22		
7361 School Safety and Security Grants	215,507.85		
7369 Other Safe School Grants	40,000.00		
7505 Ready to Learn Block Grant	559,007.00		
7506 PAsmart Grants	(5,995.00)		
7509 Supplemental Equipment Grants	51,202.75		
7599 Other State Revenue Not Listed Elsewhere in the 7000 Series	1,501,368.68		
7820 State Share of Retirement Contributions	5,791,584.01		
TOTAL Revenue from State Sources	\$30,054,482.30		

**Revenue Reported
In Current Year**

Revenue from Federal Sources

8390 Other Restricted Federal Grants-in-Aid Directly from the Federal Government	20,983.50		
8514 NCLB, Title I - Improving the Academic Achievement of the Disadvantaged	1,318,246.29		
8515 NCLB, Title II - Preparing, Training and Recruiting High Quality Teachers and Principals	167,819.00		
8517 NCLB, Title IV - 21St Century Schools	524,708.10		
8521 Vocational Education - Operating Expenditures	69,137.00		
8741 Elementary and Secondary School Emergency Relief Fund (ESSER)	1,084,349.00		
8742 Governor's Emergency Education Relief Fund (GEER)	132,162.00		
8749 Other CARES Act Funding	1,925,527.66		
8820 Medical Assistance Reimbursement for Administrative Claiming (Quarterly) Program	44,534.93		
TOTAL Revenue from Federal Sources	\$5,287,467.48		

Revenue Reported
In Current Year

Other Financing Sources

9350 Enterprise Fund Transfers	51,031.73		
TOTAL Other Financing Sources	\$51,031.73		
TOTAL FROM ALL SOURCES	\$71,188,388.17		\$33,725,053.53

LEA : 123466403 Pottstown SD

Printed 12/22/2021 2:47:57 PM

	<u>General Fund (10)</u>	<u>Student Sponsored Activity Fund (21)</u>	<u>Public Purpose Trust (27)</u>	<u>Other Compt Approved (28)</u>	<u>Athletic / Activity (29)</u>	<u>Capital Reserve (690, 1850) (31)</u>
6000 Revenue from Local Sources						
6111 Current Real Estate Taxes	29,021,452.35					
6112 Interim Real Estate Taxes	34,744.11					
6113 Public Utility Realty Taxes	32,038.51					
6114 Payments in Lieu of Current Taxes - State / Local	41,701.84					
6120 Current Per Capita Taxes, Section 679	34,477.65					
6141 Current Act 511 Per Capita Taxes	34,477.65					
6143 Current Act 511 Local Services Taxes	39,790.59					
6151 Current Act 511 Earned Income Taxes	2,304,627.11					
6152 Current Act 511 Occupation Taxes	171,872.26					
6153 Current Act 511 Real Estate Transfer Taxes	544,064.84					
6411 Delinquent Real Estate Taxes	1,229,878.31					
6420 Delinquent Per Capita Taxes, Section 679	24,230.16					
6440 Delinquent Local Enabling Taxes - Flat Rate Assessments	24,230.16					
6452 Delinquent Act 511 Occupation Taxes	187,467.99					
6500 Earnings on Investments	31,009.27				168.27	
6700 Revenues from LEA Activities					8,096.55	
6832 Federal IDEA Revenue Received as Pass Through	756,839.30					
6839 Federal Revenue Received from Other Sources	8,296.51					
6910 Rentals	103,764.04					
6920 Contributions and Donations from Private Sources	363,460.98					
6991 Refunds of a Prior Year Expenditure	244,703.30					
6999 Other Revenues Not Specified Above	562,279.73					
6000 Total Revenue from Local Sources	\$35,795,406.66				\$8,264.82	
7000 Revenue from State Sources						
7111 Basic Education Funding-Formula	12,144,111.52					
7112 Basic Education Funding-Social Security	1,114,655.21					
7160 Tuition for Orphans Subsidy	5,063.09					
7220 Vocational Education	475,439.42					
7271 Special Education funds for School-Aged Pupils	2,437,564.08					
7292 Pre-K Counts	2,467,500.00					
7311 Pupil Transportation Subsidy	380,285.32					
7312 Nonpublic and Charter School Pupil Transportation Subsidy	10,780.00					
7320 Rental and Sinking Fund Payments / Building Reimbursement Subsidy	1,180,188.29					
7330 Health Services (Medical, Dental, Nurse, Act 25)	62,315.86					
7340 State Property Tax Reduction Allocation	1,623,904.22					

LEA : 123466403 Pottstown SD

Printed 12/22/2021 2:47:57 PM

	<u>Capital Reserve</u> <u>(1431) (32)</u>	<u>Other Capital</u> <u>Projects Fund (39)</u>	<u>Debt Service (40)</u>	<u>Permanent (90)</u>	<u>Total</u>
6000 Revenue from Local Sources					
6111 Current Real Estate Taxes					29,021,452.35
6112 Interim Real Estate Taxes					34,744.11
6113 Public Utility Realty Taxes					32,038.51
6114 Payments in Lieu of Current Taxes - State / Local					41,701.84
6120 Current Per Capita Taxes, Section 679					34,477.65
6141 Current Act 511 Per Capita Taxes					34,477.65
6143 Current Act 511 Local Services Taxes					39,790.59
6151 Current Act 511 Earned Income Taxes					2,304,627.11
6152 Current Act 511 Occupation Taxes					171,872.26
6153 Current Act 511 Real Estate Transfer Taxes					544,064.84
6411 Delinquent Real Estate Taxes					1,229,878.31
6420 Delinquent Per Capita Taxes, Section 679					24,230.16
6440 Delinquent Local Enabling Taxes - Flat Rate Assessments					24,230.16
6452 Delinquent Act 511 Occupation Taxes					187,467.99
6500 Earnings on Investments		73.84			31,251.38
6700 Revenues from LEA Activities					8,096.55
6832 Federal IDEA Revenue Received as Pass Through					756,839.30
6839 Federal Revenue Received from Other Sources					8,296.51
6910 Rentals					103,764.04
6920 Contributions and Donations from Private Sources					363,460.98
6991 Refunds of a Prior Year Expenditure					244,703.30
6999 Other Revenues Not Specified Above		2,532.36			564,812.09
6000 Total Revenue from Local Sources		\$2,606.20			\$35,806,277.68
7000 Revenue from State Sources					
7111 Basic Education Funding-Formula					12,144,111.52
7112 Basic Education Funding-Social Security					1,114,655.21
7160 Tuition for Orphans Subsidy					5,063.09
7220 Vocational Education					475,439.42
7271 Special Education funds for School-Aged Pupils					2,437,564.08
7292 Pre-K Counts					2,467,500.00
7311 Pupil Transportation Subsidy					380,285.32
7312 Nonpublic and Charter School Pupil Transportation Subsidy					10,780.00
7320 Rental and Sinking Fund Payments / Building Reimbursement Subsidy					1,180,188.29
7330 Health Services (Medical, Dental, Nurse, Act 25)					62,315.86
7340 State Property Tax Reduction Allocation					1,623,904.22

LEA : 123466403 Pottstown SD

Printed 12/22/2021 2:47:57 PM

	<u>General Fund (10)</u>	<u>Student Sponsored Activity Fund (21)</u>	<u>Public Purpose Trust (27)</u>	<u>Other Compt Approved (28)</u>	<u>Athletic / Activity (29)</u>	<u>Capital Reserve (690.1850) (31)</u>
7000 Revenue from State Sources						
7361 School Safety and Security Grants	215,507.85					
7369 Other Safe School Grants	40,000.00					
7505 Ready to Learn Block Grant	559,007.00					
7506 PAsmart Grants	(5,995.00)					
7509 Supplemental Equipment Grants	51,202.75					
7599 Other State Revenue Not Listed Elsewhere in the 7000 Series	1,501,368.68					
7820 State Share of Retirement Contributions	5,791,584.01					
7000 Total Revenue from State Sources	\$30,054,482.30					
8000 Revenue from Federal Sources						
8390 Other Restricted Federal Grants-in-Aid Directly from the Federal Government	20,983.50					
8514 NCLB, Title I - Improving the Academic Achievement of the Disadvantaged	1,318,246.29					
8515 NCLB, Title II - Preparing, Training and Recruiting High Quality Teachers and Principals	167,819.00					
8517 NCLB, Title IV - 21st Century Schools	524,708.10					
8521 Vocational Education - Operating Expenditures	69,137.00					
8741 Elementary and Secondary School Emergency Relief Fund (ESSER)	1,084,349.00					
8742 Governor's Emergency Education Relief Fund (GEER)	132,162.00					
8749 Other CARES Act Funding	1,925,527.66					
8820 Medical Assistance Reimbursement for Administrative Claiming (Quarterly) Program	44,534.93					
8000 Total Revenue from Federal Sources	\$5,287,467.48					
9000 Other Financing Sources						
9350 Enterprise Fund Transfers	51,031.73					
9000 Total Other Financing Sources	\$51,031.73					
Total From All Sources	\$71,188,388.17				\$8,264.82	

	<u>Capital Reserve</u> <u>(1431) (32)</u>	<u>Other Capital</u> <u>Projects Fund (39)</u>	<u>Debt Service (40)</u>	<u>Permanent (90)</u>	<u>Total</u>
7000 Revenue from State Sources					
7361 School Safety and Security Grants					215,507.85
7369 Other Safe School Grants					40,000.00
7505 Ready to Learn Block Grant					559,007.00
7506 PAsmart Grants					(5,995.00)
7509 Supplemental Equipment Grants					51,202.75
7599 Other State Revenue Not Listed Elsewhere in the 7000 Series					1,501,368.68
7820 State Share of Retirement Contributions					5,791,584.01
7000 Total Revenue from State Sources					\$30,054,482.30
8000 Revenue from Federal Sources					
8390 Other Restricted Federal Grants-in-Aid Directly from the Federal Government					20,983.50
8514 NCLB, Title I - Improving the Academic Achievement of the Disadvantaged					1,318,246.29
8515 NCLB, Title II - Preparing, Training and Recruiting High Quality Teachers and Principals					167,819.00
8517 NCLB, Title IV - 21st Century Schools					524,708.10
8521 Vocational Education - Operating Expenditures					69,137.00
8741 Elementary and Secondary School Emergency Relief Fund (ESSER)					1,084,349.00
8742 Governor's Emergency Education Relief Fund (GEER)					132,162.00
8749 Other CARES Act Funding					1,925,527.66
8820 Medical Assistance Reimbursement for Administrative Claiming (Quarterly) Program					44,534.93
8000 Total Revenue from Federal Sources					\$5,287,467.48
9000 Other Financing Sources					
9350 Enterprise Fund Transfers					51,031.73
9000 Total Other Financing Sources					\$51,031.73
Total From All Sources		\$2,606.20			\$71,199,259.19

	<u>General Fund (10)</u>	<u>Student Sponsored Activity Fund (21)</u>	<u>Public Purpose Trust (27)</u>	<u>Other Compt Approved (28)</u>	<u>Athletic / Activity (29)</u>	<u>Capital Reserve (690.1850) (31)</u>
Revenue from Local Sources	35,795,406.66				8,264.82	
Revenue from State Sources	30,054,482.30					
Revenue from Federal Sources	5,287,467.48					
Other Financing Sources	51,031.73					
Total From All Sources	\$71,188,388.17				\$8,264.82	

	<u>Capital Reserve (1431)</u> <u>(32)</u>	<u>Other Capital Projects</u> <u>Fund (39)</u>	<u>Debt Service (40)</u>	<u>Permanent (90)</u>	<u>Total</u>
Revenue from Local Sources		2,606.20			35,806,277.68
Revenue from State Sources					30,054,482.30
Revenue from Federal Sources					5,287,467.48
Other Financing Sources					51,031.73
Total From All Sources		\$2,606.20			\$71,199,259.19

General Fund (10)

	<u>Total</u>
1000 Instruction	
100 Personnel Services – Salaries	
100 Personnel Services – Salaries	17,246,320.90
Total Personnel Services – Salaries	\$17,246,320.90
200 Personnel Services – Employee Benefits	
210 Group Insurance – Contracted Provider	4,469,139.13
220 Social Security Contributions	1,256,972.48
230 PSERS Retirement Contributions	5,897,060.32
250 Unemployment Compensation	42,807.31
260 Workers’ Compensation	147,576.47
299 All Other Employee Benefits	4,375.00
Total Personnel Services – Employee Benefits	\$11,817,930.71
300 Purchased Professional and Technical Services	
322 Professional Educational Services – Ius	1,463,365.99
323 Professional Educational Services – Other Educational Agencies	15,952.01
329 Professional Educational Services – Other	523,361.57
330 Other Professional Services	267,986.85
360 Employee Training and Development Services	7,049.00
390 Other Purchased Professional and Technical Services	201,882.80
Total Purchased Professional and Technical Services	\$2,479,598.22
400 Purchased Property Services	
410 Cleaning Services	336.00
430 Repairs and Maintenance Services	21,799.66
440 Rentals	33,735.28
Total Purchased Property Services	\$55,870.94
500 Other Purchased Services	
510 Student Transportation Services	514.17
530 Communications	10,272.61
541 Advertising Related to Federal Grant Awards	2,004.30
561 Tuition To Other School Districts Within the State	134,130.82
562 Tuition To Pennsylvania Charter Schools	3,778,297.61
563 Tuition To Nonpublic Schools	1,244,184.77
567 Tuition To Approved Private Schools (APS) and PA Chartered Schools for the Deaf and Blind	554,187.97
568 Tuition To Private Residential Rehabilitative Institutions (PRRI) [In-State] and Detention Centers	153.67
580 Travel	2,433.53
594 IU Payment By Withholding for Institutionalized Children’s Programs – Special Classes	886.55
Total Other Purchased Services	\$5,727,066.00
600 Supplies	
610 General Supplies	687,777.52
640 Books and Periodicals	412,988.89
650 Supplies & Fees – Technology Related	930,188.63
Total Supplies	\$2,030,955.04
700 Property	
752 Capital Equipment – Original and Additional	174,659.58

General Fund (10)

1000 Instruction		<u>Total</u>
Total Property		\$174,659.58
800 Other Objects		
810 Dues and Fees		250.00
890 Miscellaneous Expenditures		1,100,769.96
Total Other Objects		\$1,101,019.96
Total 1000 Instruction		\$40,633,421.35

LEA : 123466403 Pottstown SD

Printed 12/22/2021 2:48:12 PM

Page - 3 of 28

General Fund (10)**1100 Regular Programs – Elementary / Secondary**

	<u>Elementary</u>	<u>Secondary</u>	<u>Federal</u>	<u>Total</u>
100 Personnel Services – Salaries				
100 Personnel Services – Salaries	5,893,284.29	3,928,856.19	1,386,641.23	11,208,781.71
Total Personnel Services – Salaries	\$5,893,284.29	\$3,928,856.19	\$1,386,641.23	\$11,208,781.71
200 Personnel Services – Employee Benefits				
210 Group Insurance – Contracted Provider	1,290,012.11	860,008.07	403,470.45	2,553,490.63
220 Social Security Contributions	430,648.94	287,099.29	100,711.23	818,459.46
230 PSERS Retirement Contributions	2,195,024.56	1,463,349.71	181,344.52	3,839,718.79
250 Unemployment Compensation	7,415.72	4,943.82		12,359.54
260 Workers' Compensation	88,545.88	59,030.59		147,576.47
299 All Other Employee Benefits	1,837.50	1,225.00	1,312.50	4,375.00
Total Personnel Services – Employee Benefits	\$4,013,484.71	\$2,675,656.48	\$686,838.70	\$7,375,979.89
300 Purchased Professional and Technical Services				
322 Professional Educational Services – Ius	2,676.00	1,784.00		4,460.00
329 Professional Educational Services – Other	91,917.51	61,278.34	893.85	154,089.70
390 Other Purchased Professional and Technical Services	16,062.00	10,708.00	4,314.00	31,084.00
Total Purchased Professional and Technical Services	\$110,655.51	\$73,770.34	\$5,207.85	\$189,633.70
400 Purchased Property Services				
430 Repairs and Maintenance Services	606.83	404.55		1,011.38
Total Purchased Property Services	\$606.83	\$404.55		\$1,011.38
500 Other Purchased Services				
562 Tuition To Pennsylvania Charter Schools	1,094,967.59	729,978.39		1,824,945.98
568 Tuition To Private Residential Rehabilitative Institutions (PRRI) [In-State] and Detention Centers	92.20	61.47		153.67
580 Travel	553.79	369.20		922.99
Total Other Purchased Services	\$1,095,613.58	\$730,409.06		\$1,826,022.64
600 Supplies				
610 General Supplies	56,548.58	37,699.06	68,857.31	163,104.95
640 Books and Periodicals	132,239.14	88,159.42	40,741.80	261,140.36
650 Supplies & Fees – Technology Related	14,114.44	9,409.62	201,277.56	224,801.62
Total Supplies	\$202,902.16	\$135,268.10	\$310,876.67	\$649,046.93
700 Property				
752 Capital Equipment – Original and Additional	1,334.30	889.53		2,223.83
Total Property	\$1,334.30	\$889.53		\$2,223.83
Total 1100 Regular Programs – Elementary / Secondary	\$11,317,881.38	\$7,545,254.25	\$2,389,564.45	\$21,252,700.08

General Fund (10)

	<u>Elementary</u>	<u>Secondary</u>	<u>Federal</u>	<u>Total</u>
1110 Regular Programs				
100 Personnel Services – Salaries				
100 Personnel Services – Salaries	5,893,284.29	3,928,856.19	1,386,641.23	11,208,781.71
Total Personnel Services – Salaries	\$5,893,284.29	\$3,928,856.19	\$1,386,641.23	\$11,208,781.71
200 Personnel Services – Employee Benefits				
210 Group Insurance – Contracted Provider	1,290,012.11	860,008.07	403,470.45	2,553,490.63
220 Social Security Contributions	430,648.94	287,099.29	100,711.23	818,459.46
230 PSERS Retirement Contributions	2,195,024.56	1,463,349.71	181,344.52	3,839,718.79
250 Unemployment Compensation	7,415.72	4,943.82		12,359.54
260 Workers' Compensation	88,545.88	59,030.59		147,576.47
299 All Other Employee Benefits	1,837.50	1,225.00	1,312.50	4,375.00
Total Personnel Services – Employee Benefits	\$4,013,484.71	\$2,675,656.48	\$686,838.70	\$7,375,979.89
300 Purchased Professional and Technical Services				
322 Professional Educational Services – Ius	2,676.00	1,784.00		4,460.00
329 Professional Educational Services – Other	91,917.51	61,278.34	893.85	154,089.70
390 Other Purchased Professional and Technical Services	16,062.00	10,708.00	4,314.00	31,084.00
Total Purchased Professional and Technical Services	\$110,655.51	\$73,770.34	\$5,207.85	\$189,633.70
400 Purchased Property Services				
430 Repairs and Maintenance Services	606.83	404.55		1,011.38
Total Purchased Property Services	\$606.83	\$404.55		\$1,011.38
500 Other Purchased Services				
562 Tuition To Pennsylvania Charter Schools	1,094,967.59	729,978.39		1,824,945.98
568 Tuition To Private Residential Rehabilitative Institutions (PRRI) [In-State] and Detention Centers	92.20	61.47		153.67
580 Travel	553.79	369.20		922.99
Total Other Purchased Services	\$1,095,613.58	\$730,409.06		\$1,826,022.64
600 Supplies				
610 General Supplies	56,548.58	37,699.06	68,857.31	163,104.95
640 Books and Periodicals	132,239.14	88,159.42	40,741.80	261,140.36
650 Supplies & Fees – Technology Related	14,114.44	9,409.62	201,277.56	224,801.62
Total Supplies	\$202,902.16	\$135,268.10	\$310,876.67	\$649,046.93
700 Property				
752 Capital Equipment – Original and Additional	1,334.30	889.53		2,223.83
Total Property	\$1,334.30	\$889.53		\$2,223.83
Total 1110 Regular Programs	\$11,317,881.38	\$7,545,254.25	\$2,389,564.45	\$21,252,700.08

General Fund (10)

1200 Special Programs – Elementary / Secondary	<u>Elementary</u>	<u>Secondary</u>	<u>Federal</u>	<u>Total</u>
100 Personnel Services – Salaries				
100 Personnel Services – Salaries	2,124,458.44	1,416,305.64	563,704.29	4,104,468.37
Total Personnel Services – Salaries	\$2,124,458.44	\$1,416,305.64	\$563,704.29	\$4,104,468.37
200 Personnel Services – Employee Benefits				
210 Group Insurance – Contracted Provider	772,176.89	514,784.57	149,665.15	1,436,626.61
220 Social Security Contributions	154,043.43	102,695.61	40,748.99	297,488.03
230 PSERS Retirement Contributions	725,358.68	483,572.44	192,939.31	1,401,870.43
250 Unemployment Compensation	17,144.41	11,429.60		28,574.01
Total Personnel Services – Employee Benefits	\$1,668,723.41	\$1,112,482.22	\$383,353.45	\$3,164,559.08
300 Purchased Professional and Technical Services				
322 Professional Educational Services – Ius	840,610.71	520,768.31	11,441.52	1,372,820.54
323 Professional Educational Services – Other Educational Agencies	397.42	264.95		662.37
329 Professional Educational Services – Other	87,473.45	58,315.62	218,049.20	363,838.27
330 Other Professional Services	157,792.11	105,194.74		262,986.85
390 Other Purchased Professional and Technical Services	4,974.63	3,316.42		8,291.05
Total Purchased Professional and Technical Services	\$1,091,248.32	\$687,860.04	\$229,490.72	\$2,008,599.08
500 Other Purchased Services				
510 Student Transportation Services	193.64	129.10	191.43	514.17
530 Communications	3,263.32	2,175.54		5,438.86
561 Tuition To Other School Districts Within the State	722.71	481.80		1,204.51
562 Tuition To Pennsylvania Charter Schools	1,172,010.97	781,340.66		1,953,351.63
563 Tuition To Nonpublic Schools	742,438.06	494,958.71		1,237,396.77
567 Tuition To Approved Private Schools (APS) and PA Chartered Schools for the Deaf and Blind	332,512.78	221,675.19		554,187.97
580 Travel	288.47	192.32	437.26	918.05
594 IU Payment By Withholding for Institutionalized Children’s Programs – Special Classes	531.93	354.62		886.55
Total Other Purchased Services	\$2,251,961.88	\$1,501,307.94	\$628.69	\$3,753,898.51
600 Supplies				
610 General Supplies	88,962.77	59,308.51	138,789.09	287,060.37
640 Books and Periodicals	56,995.13	37,996.75	55,115.97	150,107.85
650 Supplies & Fees – Technology Related			16,411.24	16,411.24
Total Supplies	\$145,957.90	\$97,305.26	\$210,316.30	\$453,579.46
Total 1200 Special Programs – Elementary / Secondary	\$7,282,349.95	\$4,815,261.10	\$1,387,493.45	\$13,485,104.50

General Fund (10)

1210 Life Skills Support

	<u>Elementary</u>	<u>Secondary</u>	<u>Federal</u>	<u>Total</u>
100 Personnel Services – Salaries				
100 Personnel Services – Salaries	185,310.80	123,540.54	177,205.86	486,057.20
Total Personnel Services – Salaries	\$185,310.80	\$123,540.54	\$177,205.86	\$486,057.20
200 Personnel Services – Employee Benefits				
210 Group Insurance – Contracted Provider	50,829.05	33,886.03	42,845.43	127,560.51
220 Social Security Contributions	13,665.82	9,110.54	12,635.69	35,412.05
230 PSERS Retirement Contributions	63,547.81	42,365.21	60,496.16	166,409.18
Total Personnel Services – Employee Benefits	\$128,042.68	\$85,361.78	\$115,977.28	\$329,381.74
300 Purchased Professional and Technical Services				
322 Professional Educational Services – Ius	63,234.63	42,156.42		105,391.05
323 Professional Educational Services – Other Educational Agencies	62.40	41.60		104.00
329 Professional Educational Services – Other	364.15	242.76		606.91
Total Purchased Professional and Technical Services	\$63,661.18	\$42,440.78		\$106,101.96
500 Other Purchased Services				
561 Tuition To Other School Districts Within the State	197.47	131.64		329.11
Total Other Purchased Services	\$197.47	\$131.64		\$329.11
600 Supplies				
610 General Supplies	2,910.70	1,940.46	7,469.71	12,320.87
640 Books and Periodicals	377.47	251.64	55,115.97	55,745.08
Total Supplies	\$3,288.17	\$2,192.10	\$62,585.68	\$68,065.95
Total 1210 Life Skills Support	\$380,500.30	\$253,666.84	\$355,768.82	\$989,935.96

General Fund (10)

1220 Sensory Support

300 Purchased Professional and Technical Services

	<u>Elementary</u>	<u>Secondary</u>	<u>Federal</u>	<u>Total</u>
322 Professional Educational Services – lus	158,325.13	105,550.09		263,875.22
323 Professional Educational Services – Other Educational Agencies	335.02	223.35		558.37
329 Professional Educational Services – Other	41,265.43	27,510.28		68,775.71
Total Purchased Professional and Technical Services	\$199,925.58	\$133,283.72		\$333,209.30
Total 1220 Sensory Support	\$199,925.58	\$133,283.72		\$333,209.30

General Fund (10)

1230 Emotional Support

	<u>Elementary</u>	<u>Secondary</u>	<u>Federal</u>	<u>Total</u>
100 Personnel Services – Salaries				
100 Personnel Services – Salaries	566,999.40	377,999.60	114,714.01	1,059,713.01
Total Personnel Services – Salaries	\$566,999.40	\$377,999.60	\$114,714.01	\$1,059,713.01
200 Personnel Services – Employee Benefits				
210 Group Insurance – Contracted Provider	178,909.15	119,272.76	36,354.09	334,536.00
220 Social Security Contributions	41,454.05	27,636.03	8,156.83	77,246.91
230 PSERS Retirement Contributions	193,175.20	128,783.46	38,650.26	360,608.92
Total Personnel Services – Employee Benefits	\$413,538.40	\$275,692.25	\$83,161.18	\$772,391.83
300 Purchased Professional and Technical Services				
322 Professional Educational Services – Ius	249,756.22	166,504.15		416,260.37
329 Professional Educational Services – Other	26,487.77	17,658.52		44,146.29
Total Purchased Professional and Technical Services	\$276,243.99	\$184,162.67		\$460,406.66
500 Other Purchased Services				
510 Student Transportation Services	114.85	76.57		191.42
530 Communications	439.62	293.08		732.70
561 Tuition To Other School Districts Within the State	525.24	350.16		875.40
563 Tuition To Nonpublic Schools	584,777.65	389,851.77		974,629.42
Total Other Purchased Services	\$585,857.36	\$390,571.58		\$976,428.94
600 Supplies				
610 General Supplies	37,540.31	25,026.88		62,567.19
640 Books and Periodicals	3,028.66	2,019.10		5,047.76
Total Supplies	\$40,568.97	\$27,045.98		\$67,614.95
Total 1230 Emotional Support	\$1,883,208.12	\$1,255,472.08	\$197,875.19	\$3,336,555.39

General Fund (10)

	<u>Elementary</u>	<u>Secondary</u>	<u>Federal</u>	<u>Total</u>
1240 Academic Support				
100 Personnel Services – Salaries				
100 Personnel Services – Salaries	1,178,745.69	785,830.46	139,249.85	2,103,826.00
Total Personnel Services – Salaries	\$1,178,745.69	\$785,830.46	\$139,249.85	\$2,103,826.00
200 Personnel Services – Employee Benefits				
210 Group Insurance – Contracted Provider	504,298.82	336,199.20	38,150.06	878,648.08
220 Social Security Contributions	84,464.67	56,309.78	10,109.71	150,884.16
230 PSERS Retirement Contributions	402,509.33	268,339.55	48,055.14	718,904.02
Total Personnel Services – Employee Benefits	\$991,272.82	\$660,848.53	\$96,314.91	\$1,748,436.26
300 Purchased Professional and Technical Services				
322 Professional Educational Services – Ius	18,727.77	12,485.18		31,212.95
Total Purchased Professional and Technical Services	\$18,727.77	\$12,485.18		\$31,212.95
500 Other Purchased Services				
563 Tuition To Nonpublic Schools	83,983.79	55,989.20		139,972.99
Total Other Purchased Services	\$83,983.79	\$55,989.20		\$139,972.99
600 Supplies				
610 General Supplies	10,664.62	7,109.74		17,774.36
640 Books and Periodicals	2,105.14	1,403.43		3,508.57
Total Supplies	\$12,769.76	\$8,513.17		\$21,282.93
Total 1240 Academic Support	\$2,285,499.83	\$1,523,666.54	\$235,564.76	\$4,044,731.13

General Fund (10)

	<u>Elementary</u>	<u>Secondary</u>	<u>Federal</u>	<u>Total</u>
1241 Learning Support – Public				
100 Personnel Services – Salaries				
100 Personnel Services – Salaries	1,125,945.77	750,630.52	139,249.85	2,015,826.14
Total Personnel Services – Salaries	\$1,125,945.77	\$750,630.52	\$139,249.85	\$2,015,826.14
200 Personnel Services – Employee Benefits				
210 Group Insurance – Contracted Provider	491,443.57	327,629.04	38,150.06	857,222.67
220 Social Security Contributions	80,602.11	53,734.74	10,109.71	144,446.56
230 PSERS Retirement Contributions	384,288.06	256,192.04	48,055.14	688,535.24
Total Personnel Services – Employee Benefits	\$956,333.74	\$637,555.82	\$96,314.91	\$1,690,204.47
300 Purchased Professional and Technical Services				
322 Professional Educational Services – Ius	18,727.77	12,485.18		31,212.95
Total Purchased Professional and Technical Services	\$18,727.77	\$12,485.18		\$31,212.95
500 Other Purchased Services				
563 Tuition To Nonpublic Schools	83,983.79	55,989.20		139,972.99
Total Other Purchased Services	\$83,983.79	\$55,989.20		\$139,972.99
600 Supplies				
610 General Supplies	10,648.30	7,098.86		17,747.16
640 Books and Periodicals	2,105.14	1,403.43		3,508.57
Total Supplies	\$12,753.44	\$8,502.29		\$21,255.73
Total 1241 Learning Support – Public	\$2,197,744.51	\$1,465,163.01	\$235,564.76	\$3,898,472.28

General Fund (10)

1243 Gifted Support

	<u>Elementary</u>	<u>Secondary</u>	<u>Federal</u>	<u>Total</u>
100 Personnel Services – Salaries				
100 Personnel Services – Salaries	52,799.92	35,199.94		87,999.86
Total Personnel Services – Salaries	\$52,799.92	\$35,199.94		\$87,999.86
200 Personnel Services – Employee Benefits				
210 Group Insurance – Contracted Provider	12,855.25	8,570.16		21,425.41
220 Social Security Contributions	3,862.56	2,575.04		6,437.60
230 PSERS Retirement Contributions	18,221.27	12,147.51		30,368.78
Total Personnel Services – Employee Benefits	\$34,939.08	\$23,292.71		\$58,231.79
600 Supplies				
610 General Supplies	16.32	10.88		27.20
Total Supplies	\$16.32	\$10.88		\$27.20
Total 1243 Gifted Support	\$87,755.32	\$58,503.53		\$146,258.85

General Fund (10)

1270 Multi-Handicapped Support

300 Purchased Professional and Technical Services

	<u>Elementary</u>	<u>Secondary</u>	<u>Federal</u>	<u>Total</u>
322 Professional Educational Services – lus	288,638.62	192,425.74		481,064.36
Total Purchased Professional and Technical Services	\$288,638.62	\$192,425.74		\$481,064.36

500 Other Purchased Services

563 Tuition To Nonpublic Schools	64,163.40	42,775.60		106,939.00
Total Other Purchased Services	\$64,163.40	\$42,775.60		\$106,939.00
Total 1270 Multi-Handicapped Support	\$352,802.02	\$235,201.34		\$588,003.36

General Fund (10)

1280 Early Intervention Support

300 Purchased Professional and Technical Services

322 Professional Educational Services – lus

Total Purchased Professional and Technical Services

Total 1280 Early Intervention Support

	<u>Elementary</u>	<u>Secondary</u>	<u>Federal</u>	<u>Total</u>
	59,458.25			59,458.25
	\$59,458.25			\$59,458.25
	\$59,458.25			\$59,458.25

General Fund (10)

	<u>Elementary</u>	<u>Secondary</u>	<u>Federal</u>	<u>Total</u>
1290 Special Programs - Other Support				
100 Personnel Services – Salaries				
100 Personnel Services – Salaries	193,402.55	128,935.04	132,534.57	454,872.16
Total Personnel Services – Salaries	\$193,402.55	\$128,935.04	\$132,534.57	\$454,872.16
200 Personnel Services – Employee Benefits				
210 Group Insurance – Contracted Provider	38,139.87	25,426.58	32,315.57	95,882.02
220 Social Security Contributions	14,458.89	9,639.26	9,846.76	33,944.91
230 PSERS Retirement Contributions	66,126.34	44,084.22	45,737.75	155,948.31
250 Unemployment Compensation	17,144.41	11,429.60		28,574.01
Total Personnel Services – Employee Benefits	\$135,869.51	\$90,579.66	\$87,900.08	\$314,349.25
300 Purchased Professional and Technical Services				
322 Professional Educational Services – Ius	2,470.09	1,646.73	11,441.52	15,558.34
329 Professional Educational Services – Other	19,356.10	12,904.06	218,049.20	250,309.36
330 Other Professional Services	157,792.11	105,194.74		262,986.85
390 Other Purchased Professional and Technical Services	4,974.63	3,316.42		8,291.05
Total Purchased Professional and Technical Services	\$184,592.93	\$123,061.95	\$229,490.72	\$537,145.60
500 Other Purchased Services				
510 Student Transportation Services	78.79	52.53	191.43	322.75
530 Communications	2,823.70	1,882.46		4,706.16
562 Tuition To Pennsylvania Charter Schools	1,172,010.97	781,340.66		1,953,351.63
563 Tuition To Nonpublic Schools	9,513.22	6,342.14		15,855.36
567 Tuition To Approved Private Schools (APS) and PA Chartered Schools for the Deaf and Blind	332,512.78	221,675.19		554,187.97
580 Travel	288.47	192.32	437.26	918.05
594 IU Payment By Withholding for Institutionalized Children’s Programs – Special Classes	531.93	354.62		886.55
Total Other Purchased Services	\$1,517,759.86	\$1,011,839.92	\$628.69	\$2,530,228.47
600 Supplies				
610 General Supplies	37,847.14	25,231.43	131,319.38	194,397.95
640 Books and Periodicals	51,483.86	34,322.58		85,806.44
650 Supplies & Fees – Technology Related			16,411.24	16,411.24
Total Supplies	\$89,331.00	\$59,554.01	\$147,730.62	\$296,615.63
Total 1290 Special Programs - Other Support	\$2,120,955.85	\$1,413,970.58	\$598,284.68	\$4,133,211.11

General Fund (10)

1300 Vocational Education

	<u>Elementary</u>	<u>Secondary</u>	<u>Federal</u>	<u>Total</u>
100 Personnel Services – Salaries				
100 Personnel Services – Salaries		655,992.53	22,260.00	678,252.53
Total Personnel Services – Salaries		\$655,992.53	\$22,260.00	\$678,252.53
200 Personnel Services – Employee Benefits				
210 Group Insurance – Contracted Provider		182,578.99		182,578.99
220 Social Security Contributions		47,418.64	1,702.95	49,121.59
230 PSERS Retirement Contributions		229,371.95	2,304.55	231,676.50
Total Personnel Services – Employee Benefits		\$459,369.58	\$4,007.50	\$463,377.08
300 Purchased Professional and Technical Services				
390 Other Purchased Professional and Technical Services			245.00	245.00
Total Purchased Professional and Technical Services			\$245.00	\$245.00
400 Purchased Property Services				
430 Repairs and Maintenance Services		1,107.28		1,107.28
Total Purchased Property Services		\$1,107.28		\$1,107.28
600 Supplies				
610 General Supplies		32,476.80	75,045.56	107,522.36
Total Supplies		\$32,476.80	\$75,045.56	\$107,522.36
700 Property				
752 Capital Equipment – Original and Additional		121,233.00	51,202.75	172,435.75
Total Property		\$121,233.00	\$51,202.75	\$172,435.75
800 Other Objects				
810 Dues and Fees		80.00		80.00
Total Other Objects		\$80.00		\$80.00
Total 1300 Vocational Education		\$1,270,259.19	\$152,760.81	\$1,423,020.00

General Fund (10)

	<u>Elementary</u>	<u>Secondary</u>	<u>Federal</u>	<u>Total</u>
1400 Other Instructional Programs – Elementary / Secondary				
100 Personnel Services – Salaries				
100 Personnel Services – Salaries	128,553.98	85,702.66	138,113.88	352,370.52
Total Personnel Services – Salaries	\$128,553.98	\$85,702.66	\$138,113.88	\$352,370.52
200 Personnel Services – Employee Benefits				
210 Group Insurance – Contracted Provider	20,994.89	13,996.59	554.60	35,546.08
220 Social Security Contributions	9,626.74	6,417.82	10,329.53	26,374.09
230 PSERS Retirement Contributions	63,991.32	42,660.89	14,724.29	121,376.50
250 Unemployment Compensation	1,124.26	749.50		1,873.76
Total Personnel Services – Employee Benefits	\$95,737.21	\$63,824.80	\$25,608.42	\$185,170.43
300 Purchased Professional and Technical Services				
322 Professional Educational Services – Ius	51,651.27	34,434.18		86,085.45
323 Professional Educational Services – Other Educational Agencies	9,173.78	6,115.86		15,289.64
330 Other Professional Services			5,000.00	5,000.00
390 Other Purchased Professional and Technical Services	11,112.00	7,408.00	49,220.00	67,740.00
Total Purchased Professional and Technical Services	\$71,937.05	\$47,958.04	\$54,220.00	\$174,115.09
500 Other Purchased Services				
530 Communications	346.61	231.06	1,080.67	1,658.34
561 Tuition To Other School Districts Within the State	79,755.79	53,170.52		132,926.31
563 Tuition To Nonpublic Schools	4,072.80	2,715.20		6,788.00
580 Travel			2.88	2.88
Total Other Purchased Services	\$84,175.20	\$56,116.78	\$1,083.55	\$141,375.53
600 Supplies				
610 General Supplies	3,993.50	2,662.34	96,279.75	102,935.59
640 Books and Periodicals	65.67	43.78	1,061.64	1,171.09
650 Supplies & Fees – Technology Related	249,441.19	166,294.13	218,058.68	633,794.00
Total Supplies	\$253,500.36	\$169,000.25	\$315,400.07	\$737,900.68
800 Other Objects				
810 Dues and Fees	102.00	68.00		170.00
Total Other Objects	\$102.00	\$68.00		\$170.00
Total 1400 Other Instructional Programs – Elementary / Secondary	\$634,005.80	\$422,670.53	\$534,425.92	\$1,591,102.25

General Fund (10)

1420 Summer School

	<u>Elementary</u>	<u>Secondary</u>	<u>Federal</u>	<u>Total</u>
100 Personnel Services – Salaries				
100 Personnel Services – Salaries			57,854.97	57,854.97
Total Personnel Services – Salaries			\$57,854.97	\$57,854.97
200 Personnel Services – Employee Benefits				
220 Social Security Contributions			4,426.36	4,426.36
230 PSERS Retirement Contributions	8,245.49	5,497.00	6,215.73	19,958.22
Total Personnel Services – Employee Benefits	\$8,245.49	\$5,497.00	\$10,642.09	\$24,384.58
300 Purchased Professional and Technical Services				
390 Other Purchased Professional and Technical Services			37,225.00	37,225.00
Total Purchased Professional and Technical Services			\$37,225.00	\$37,225.00
600 Supplies				
610 General Supplies			19,098.92	19,098.92
Total Supplies			\$19,098.92	\$19,098.92
Total 1420 Summer School	\$8,245.49	\$5,497.00	\$124,820.98	\$138,563.47

General Fund (10)

1430 Homebound Instruction

300 Purchased Professional and Technical Services

323 Professional Educational Services – Other Educational Agencies

Elementary

Secondary

Federal

Total

9,173.78

6,115.86

15,289.64

Total Purchased Professional and Technical Services

\$9,173.78

\$6,115.86

\$15,289.64

500 Other Purchased Services

563 Tuition To Nonpublic Schools

712.80

475.20

1,188.00

Total Other Purchased Services

\$712.80

\$475.20

\$1,188.00

Total 1430 Homebound Instruction

\$9,886.58

\$6,591.06

\$16,477.64

General Fund (10)

	<u>Elementary</u>	<u>Secondary</u>	<u>Federal</u>	<u>Total</u>
1440 Alternative Regular Education Programs				
100 Personnel Services – Salaries				
100 Personnel Services – Salaries	128,553.98	85,702.66		214,256.64
Total Personnel Services – Salaries	\$128,553.98	\$85,702.66		\$214,256.64
200 Personnel Services – Employee Benefits				
210 Group Insurance – Contracted Provider	20,994.89	13,996.59		34,991.48
220 Social Security Contributions	9,626.74	6,417.82		16,044.56
230 PSERS Retirement Contributions	44,256.64	29,504.43		73,761.07
Total Personnel Services – Employee Benefits	\$74,878.27	\$49,918.84		\$124,797.11
300 Purchased Professional and Technical Services				
322 Professional Educational Services – lus	51,651.27	34,434.18		86,085.45
Total Purchased Professional and Technical Services	\$51,651.27	\$34,434.18		\$86,085.45
500 Other Purchased Services				
530 Communications	164.80	109.86		274.66
561 Tuition To Other School Districts Within the State	79,755.79	53,170.52		132,926.31
563 Tuition To Nonpublic Schools	3,360.00	2,240.00		5,600.00
Total Other Purchased Services	\$83,280.59	\$55,520.38		\$138,800.97
600 Supplies				
610 General Supplies	890.75	593.84		1,484.59
640 Books and Periodicals	65.67	43.78		109.45
650 Supplies & Fees – Technology Related	249,441.19	166,294.13	218,058.68	633,794.00
Total Supplies	\$250,397.61	\$166,931.75	\$218,058.68	\$635,388.04
800 Other Objects				
810 Dues and Fees	102.00	68.00		170.00
Total Other Objects	\$102.00	\$68.00		\$170.00
Total 1440 Alternative Regular Education Programs	\$588,863.72	\$392,575.81	\$218,058.68	\$1,199,498.21

General Fund (10)

1441 Adjudicated / Court-Placed Programs	<u>Elementary</u>	<u>Secondary</u>	<u>Federal</u>	<u>Total</u>
300 <u>Purchased Professional and Technical Services</u>				
322 Professional Educational Services – lus	51,651.27	34,434.18		86,085.45
Total Purchased Professional and Technical Services	\$51,651.27	\$34,434.18		\$86,085.45
500 <u>Other Purchased Services</u>				
561 Tuition To Other School Districts Within the State	79,755.79	53,170.52		132,926.31
Total Other Purchased Services	\$79,755.79	\$53,170.52		\$132,926.31
Total 1441 Adjudicated / Court-Placed Programs	\$131,407.06	\$87,604.70		\$219,011.76

LEA : 123466403 Pottstown SD

Printed 12/22/2021 2:48:12 PM

General Fund (10)

	<u>Elementary</u>	<u>Secondary</u>	<u>Federal</u>	<u>Total</u>
1442 Alternative Education Programs				
100 Personnel Services – Salaries				
100 Personnel Services – Salaries	128,553.98	85,702.66		214,256.64
Total Personnel Services – Salaries	\$128,553.98	\$85,702.66		\$214,256.64
200 Personnel Services – Employee Benefits				
210 Group Insurance – Contracted Provider	20,994.89	13,996.59		34,991.48
220 Social Security Contributions	9,626.74	6,417.82		16,044.56
230 PSERS Retirement Contributions	44,256.64	29,504.43		73,761.07
Total Personnel Services – Employee Benefits	\$74,878.27	\$49,918.84		\$124,797.11
500 Other Purchased Services				
530 Communications	164.80	109.86		274.66
563 Tuition To Nonpublic Schools	3,360.00	2,240.00		5,600.00
Total Other Purchased Services	\$3,524.80	\$2,349.86		\$5,874.66
600 Supplies				
610 General Supplies	890.75	593.84		1,484.59
640 Books and Periodicals	65.67	43.78		109.45
650 Supplies & Fees – Technology Related	249,441.19	166,294.13	218,058.68	633,794.00
Total Supplies	\$250,397.61	\$166,931.75	\$218,058.68	\$635,388.04
800 Other Objects				
810 Dues and Fees	102.00	68.00		170.00
Total Other Objects	\$102.00	\$68.00		\$170.00
Total 1442 Alternative Education Programs	\$457,456.66	\$304,971.11	\$218,058.68	\$980,486.45

General Fund (10)

1450 Instructional Programs Outside the Established School Day

	<u>Elementary</u>	<u>Secondary</u>	<u>Federal</u>	<u>Total</u>
100 Personnel Services – Salaries				
100 Personnel Services – Salaries			80,258.91	80,258.91
Total Personnel Services – Salaries			\$80,258.91	\$80,258.91
200 Personnel Services – Employee Benefits				
210 Group Insurance – Contracted Provider			554.60	554.60
220 Social Security Contributions			5,903.17	5,903.17
230 PSERS Retirement Contributions	11,489.19	7,659.46	8,508.56	27,657.21
250 Unemployment Compensation	1,124.26	749.50		1,873.76
Total Personnel Services – Employee Benefits	\$12,613.45	\$8,408.96	\$14,966.33	\$35,988.74
300 Purchased Professional and Technical Services				
330 Other Professional Services			5,000.00	5,000.00
390 Other Purchased Professional and Technical Services	11,112.00	7,408.00	11,995.00	30,515.00
Total Purchased Professional and Technical Services	\$11,112.00	\$7,408.00	\$16,995.00	\$35,515.00
500 Other Purchased Services				
530 Communications	181.81	121.20	1,080.67	1,383.68
580 Travel			2.88	2.88
Total Other Purchased Services	\$181.81	\$121.20	\$1,083.55	\$1,386.56
600 Supplies				
610 General Supplies	3,102.75	2,068.50	77,180.83	82,352.08
640 Books and Periodicals			1,061.64	1,061.64
Total Supplies	\$3,102.75	\$2,068.50	\$78,242.47	\$83,413.72
Total 1450 Instructional Programs Outside the Established School Day	\$27,010.01	\$18,006.66	\$191,546.26	\$236,562.93

General Fund (10)

1500 Nonpublic School Programs

300 Purchased Professional and Technical Services

360 Employee Training and Development Services

Elementary

Secondary

Federal

Total

7,049.00

7,049.00

Total Purchased Professional and Technical Services

\$7,049.00

\$7,049.00

600 Supplies

640 Books and Periodicals

650 Supplies & Fees – Technology Related

372.59

569.59

6,729.30

6,977.10

Total Supplies

\$7,101.89

\$7,546.69

Total 1500 Nonpublic School Programs

\$14,150.89

\$14,595.69

General Fund (10)

	<u>Elementary</u>	<u>Secondary</u>	<u>Federal</u>	<u>Total</u>
1800 Pre-Kindergarten				
100 <u>Personnel Services – Salaries</u>				
100 Personnel Services – Salaries				902,447.77
Total Personnel Services – Salaries				\$902,447.77
200 <u>Personnel Services – Employee Benefits</u>				
210 Group Insurance – Contracted Provider				260,896.82
220 Social Security Contributions				65,529.31
230 PSERS Retirement Contributions				302,418.10
Total Personnel Services – Employee Benefits				\$628,844.23
300 <u>Purchased Professional and Technical Services</u>				
329 Professional Educational Services – Other				5,433.60
390 Other Purchased Professional and Technical Services				94,522.75
Total Purchased Professional and Technical Services				\$99,956.35
400 <u>Purchased Property Services</u>				
410 Cleaning Services				336.00
430 Repairs and Maintenance Services				19,681.00
440 Rentals				33,735.28
Total Purchased Property Services				\$53,752.28
500 <u>Other Purchased Services</u>				
530 Communications				3,175.41
541 Advertising Related to Federal Grant Awards				2,004.30
580 Travel				589.61
Total Other Purchased Services				\$5,769.32
600 <u>Supplies</u>				
610 General Supplies				27,154.25
650 Supplies & Fees – Technology Related			46,332.00	48,204.67
Total Supplies			\$46,332.00	\$75,358.92
800 <u>Other Objects</u>				
890 Miscellaneous Expenditures			34,320.00	1,100,769.96
Total Other Objects			\$34,320.00	\$1,100,769.96
Total 1800 Pre-Kindergarten			\$80,652.00	\$2,866,898.83

General Fund (10)

1801 Pre-K Instruction

Elementary Secondary Federal Total

100	<u>Personnel Services – Salaries</u>			
	100 Personnel Services – Salaries			477,024.08
Total Personnel Services – Salaries				\$477,024.08
200	<u>Personnel Services – Employee Benefits</u>			
	210 Group Insurance – Contracted Provider			116,982.30
	220 Social Security Contributions			35,217.38
	230 PSERS Retirement Contributions			161,036.47
Total Personnel Services – Employee Benefits				\$313,236.15
300	<u>Purchased Professional and Technical Services</u>			
	390 Other Purchased Professional and Technical Services			349.00
Total Purchased Professional and Technical Services				\$349.00
500	<u>Other Purchased Services</u>			
	530 Communications			1,705.59
	580 Travel			436.10
Total Other Purchased Services				\$2,141.69
600	<u>Supplies</u>			
	650 Supplies & Fees – Technology Related		46,332.00	48,204.67
Total Supplies			\$46,332.00	\$48,204.67
Total 1801 Pre-K Instruction			\$46,332.00	\$840,955.59

LEA : 123466403 Pottstown SD

Printed 12/22/2021 2:48:12 PM

General Fund (10)

1802 Pre-K Administrative Support

	<u>Elementary</u>	<u>Secondary</u>	<u>Federal</u>	<u>Total</u>
100 Personnel Services – Salaries				
100 Personnel Services – Salaries				425,423.69
Total Personnel Services – Salaries				\$425,423.69
200 Personnel Services – Employee Benefits				
210 Group Insurance – Contracted Provider				143,914.52
220 Social Security Contributions				30,311.93
230 PSERS Retirement Contributions				141,381.63
Total Personnel Services – Employee Benefits				\$315,608.08
300 Purchased Professional and Technical Services				
390 Other Purchased Professional and Technical Services				36,621.21
Total Purchased Professional and Technical Services				\$36,621.21
400 Purchased Property Services				
410 Cleaning Services				336.00
430 Repairs and Maintenance Services				19,681.00
440 Rentals				33,735.28
Total Purchased Property Services				\$53,752.28
500 Other Purchased Services				
530 Communications				1,469.82
541 Advertising Related to Federal Grant Awards				2,004.30
Total Other Purchased Services				\$3,474.12
600 Supplies				
610 General Supplies				24,900.94
Total Supplies				\$24,900.94
Total 1802 Pre-K Administrative Support				\$859,780.32

LEA : 123466403 Pottstown SD

Printed 12/22/2021 2:48:12 PM

General Fund (10)

	<u>Elementary</u>	<u>Secondary</u>	<u>Federal</u>	<u>Total</u>
1806 Pre-K Professional Development				
300 <u>Purchased Professional and Technical Services</u>				
329 Professional Educational Services – Other				5,433.60
390 Other Purchased Professional and Technical Services				57,552.54
Total Purchased Professional and Technical Services				\$62,986.14
500 <u>Other Purchased Services</u>				
580 Travel				153.51
Total Other Purchased Services				\$153.51
600 <u>Supplies</u>				
610 General Supplies				2,253.31
Total Supplies				\$2,253.31
Total 1806 Pre-K Professional Development				\$65,392.96

LEA : 123466403 Pottstown SD

Printed 12/22/2021 2:48:12 PM

General Fund (10)

1807 Pre-K Pass-Through Funds (Partners)

Elementary

Secondary

Federal

Total

800 Other Objects

890 Miscellaneous Expenditures

34,320.00

1,100,769.96

Total Other Objects

\$34,320.00

\$1,100,769.96

Total 1807 Pre-K Pass-Through Funds (Partners)

\$34,320.00

\$1,100,769.96

LEA : 123466403 Pottstown SD

Printed 12/22/2021 2:48:37 PM

General Fund (10)

2000 Support Services

Total

100 Personnel Services – Salaries

100 Personnel Services – Salaries 6,661,841.91

Total Personnel Services – Salaries

\$6,661,841.91

200 Personnel Services – Employee Benefits

210 Group Insurance – Contracted Provider 1,412,076.26

220 Social Security Contributions 491,606.31

230 PSERS Retirement Contributions 2,278,217.87

240 Tuition Reimbursement 72,910.00

250 Unemployment Compensation 41,424.47

280 Other Post-Employment Benefits (OPEB) 3,854.40

299 All Other Employee Benefits 36,050.00

Total Personnel Services – Employee Benefits

\$4,336,139.31

300 Purchased Professional and Technical Services

322 Professional Educational Services – Ius 270,236.35

323 Professional Educational Services – Other Educational Agencies 2,512.00

329 Professional Educational Services – Other 56,637.38

330 Other Professional Services 854,620.95

350 Security / Safety Services 145,651.55

360 Employee Training and Development Services 51,971.85

390 Other Purchased Professional and Technical Services 63,318.05

Total Purchased Professional and Technical Services

\$1,444,948.13

400 Purchased Property Services

410 Cleaning Services 195,559.73

420 Utility Services 83,316.54

430 Repairs and Maintenance Services 289,669.22

440 Rentals 122,295.50

460 Extermination Services 7,223.59

Total Purchased Property Services

\$698,064.58

500 Other Purchased Services

513 Contracted Carriers 994,937.27

516 Student Transportation Services From the IU 403,267.58

520 Insurance – General 270,159.01

522 Automotive Liability Insurance 10,528.00

523 General Property and Liability Insurance 9,268.00

529 Other Insurance 8,983.00

530 Communications 135,687.24

549 Other Advertising/Public Relations 4,834.61

550 Printing and Binding 30.73

580 Travel 2,531.84

595 IU Payments By Withholding 16,252.11

Total Other Purchased Services

\$1,856,479.39

600 Supplies

610 General Supplies 1,067,103.59

620 Energy 538,913.56

LEA : 123466403 Pottstown SD

Printed 12/22/2021 2:48:37 PM

General Fund (10)

2000 Support Services

Total

600 Supplies

640 Books and Periodicals	19,249.56
650 Supplies & Fees – Technology Related	1,025,830.68

Total Supplies	\$2,651,097.39
-----------------------	-----------------------

700 Property

752 Capital Equipment – Original and Additional	82,391.35
756 Capitalized Technology Equipment – Original	175,578.41
758 Capitalized Technology Software - Original	22,199.49
762 Capitalized Equipment - Replacement	103,906.36
790 Other Property	12,517.39

Total Property	\$396,593.00
-----------------------	---------------------

800 Other Objects

810 Dues and Fees	32,397.68
890 Miscellaneous Expenditures	80.95

Total Other Objects	\$32,478.63
----------------------------	--------------------

Total 2000 Support Services	\$18,077,642.34
------------------------------------	------------------------

General Fund (10)

	<u>Elementary</u>	<u>Secondary</u>	<u>Federal</u>	<u>Total</u>
2100 Support Services – Students				
100 Personnel Services – Salaries				
100 Personnel Services – Salaries	721,535.08	481,023.38	43,861.24	1,341,285.75
Total Personnel Services – Salaries	\$721,535.08	\$481,023.38	\$43,861.24	\$1,341,285.75
200 Personnel Services – Employee Benefits				
210 Group Insurance – Contracted Provider	113,724.51	75,816.35	13,227.75	231,036.97
220 Social Security Contributions	53,613.21	35,742.14	3,238.00	99,631.29
230 PSERS Retirement Contributions	253,679.39	169,119.60	4,540.96	459,941.60
Total Personnel Services – Employee Benefits	\$421,017.11	\$280,678.09	\$21,006.71	\$790,609.86
300 Purchased Professional and Technical Services				
322 Professional Educational Services – Ius	44,951.75	29,967.83		74,919.58
329 Professional Educational Services – Other	3,810.00	2,540.00		6,350.00
330 Other Professional Services	175,865.70	117,243.80		293,109.50
390 Other Purchased Professional and Technical Services				200.00
Total Purchased Professional and Technical Services	\$224,627.45	\$149,751.63		\$374,579.08
400 Purchased Property Services				
440 Rentals	2,478.82	1,652.54		4,131.36
Total Purchased Property Services	\$2,478.82	\$1,652.54		\$4,131.36
500 Other Purchased Services				
530 Communications	1,293.13	862.09		2,155.22
580 Travel	102.22	68.15		170.37
Total Other Purchased Services	\$1,395.35	\$930.24		\$2,325.59
600 Supplies				
610 General Supplies	9,624.13	6,416.09		25,884.19
650 Supplies & Fees – Technology Related	2,431.50	1,621.00		4,052.50
Total Supplies	\$12,055.63	\$8,037.09		\$29,936.69
800 Other Objects				
810 Dues and Fees			551.00	711.00
Total Other Objects			\$551.00	\$711.00
Total 2100 Support Services – Students	\$1,383,109.44	\$922,072.97	\$65,418.95	\$2,543,579.33

General Fund (10)

2110 Supervision of Student Services

100 Personnel Services – Salaries

	<u>Elementary</u>	<u>Secondary</u>	<u>Federal</u>	<u>Total</u>
100 Personnel Services – Salaries			43,218.34	43,218.34
Total Personnel Services – Salaries			\$43,218.34	\$43,218.34

200 Personnel Services – Employee Benefits

210 Group Insurance – Contracted Provider			13,227.75	13,227.75
220 Social Security Contributions			3,188.82	3,188.82
230 PSERS Retirement Contributions	6,264.14	4,176.10	4,474.40	14,914.64
Total Personnel Services – Employee Benefits	\$6,264.14	\$4,176.10	\$20,890.97	\$31,331.21

300 Purchased Professional and Technical Services

330 Other Professional Services	168.00	112.00		280.00
Total Purchased Professional and Technical Services	\$168.00	\$112.00		\$280.00

400 Purchased Property Services

440 Rentals	2,478.82	1,652.54		4,131.36
Total Purchased Property Services	\$2,478.82	\$1,652.54		\$4,131.36

500 Other Purchased Services

530 Communications	1,293.13	862.09		2,155.22
580 Travel	102.22	68.15		170.37
Total Other Purchased Services	\$1,395.35	\$930.24		\$2,325.59

600 Supplies

610 General Supplies	694.70	463.13		1,157.83
Total Supplies	\$694.70	\$463.13		\$1,157.83

Total 2110 Supervision of Student Services

	\$11,001.01	\$7,334.01	\$64,109.31	\$82,444.33
--	--------------------	-------------------	--------------------	--------------------

General Fund (10)

	<u>Elementary</u>	<u>Secondary</u>	<u>Federal</u>	<u>Total</u>
2111 Supervision of Student Services – Head of Component				
100 Personnel Services – Salaries				
100 Personnel Services – Salaries			43,218.34	43,218.34
Total Personnel Services – Salaries			\$43,218.34	\$43,218.34
200 Personnel Services – Employee Benefits				
210 Group Insurance – Contracted Provider			13,227.75	13,227.75
220 Social Security Contributions			3,188.82	3,188.82
230 PSERS Retirement Contributions	6,264.14	4,176.10	4,474.40	14,914.64
Total Personnel Services – Employee Benefits	\$6,264.14	\$4,176.10	\$20,890.97	\$31,331.21
300 Purchased Professional and Technical Services				
330 Other Professional Services	168.00	112.00		280.00
Total Purchased Professional and Technical Services	\$168.00	\$112.00		\$280.00
400 Purchased Property Services				
440 Rentals	2,478.82	1,652.54		4,131.36
Total Purchased Property Services	\$2,478.82	\$1,652.54		\$4,131.36
500 Other Purchased Services				
530 Communications	1,293.13	862.09		2,155.22
580 Travel	102.22	68.15		170.37
Total Other Purchased Services	\$1,395.35	\$930.24		\$2,325.59
600 Supplies				
610 General Supplies	694.70	463.13		1,157.83
Total Supplies	\$694.70	\$463.13		\$1,157.83
Total 2111 Supervision of Student Services – Head of Component	\$11,001.01	\$7,334.01	\$64,109.31	\$82,444.33

General Fund (10)

2120 Guidance Services

100 Personnel Services – Salaries

	<u>Elementary</u>	<u>Secondary</u>	<u>Federal</u>	<u>Total</u>
100 Personnel Services – Salaries	221,689.86	147,793.24		369,483.10
Total Personnel Services – Salaries	\$221,689.86	\$147,793.24		\$369,483.10

200 Personnel Services – Employee Benefits

210 Group Insurance – Contracted Provider	28,662.54	19,108.36		47,770.90
220 Social Security Contributions	16,552.52	11,035.02		27,587.54
230 PSERS Retirement Contributions	75,614.80	50,409.86		126,024.66
Total Personnel Services – Employee Benefits	\$120,829.86	\$80,553.24		\$201,383.10

600 Supplies

650 Supplies & Fees – Technology Related	2,431.50	1,621.00		4,052.50
Total Supplies	\$2,431.50	\$1,621.00		\$4,052.50

Total 2120 Guidance Services

	\$344,951.22	\$229,967.48		\$574,918.70
--	---------------------	---------------------	--	---------------------

General Fund (10)

	<u>Elementary</u>	<u>Secondary</u>	<u>Federal</u>	<u>Total</u>
2140 Psychological Services				
100 Personnel Services – Salaries				
100 Personnel Services – Salaries	262,058.16	174,705.44	642.90	437,406.50
Total Personnel Services – Salaries	\$262,058.16	\$174,705.44	\$642.90	\$437,406.50
200 Personnel Services – Employee Benefits				
210 Group Insurance – Contracted Provider	47,122.39	31,414.93		78,537.32
220 Social Security Contributions	19,434.53	12,956.35	49.18	32,440.06
230 PSERS Retirement Contributions	90,529.37	60,352.92	66.56	150,948.85
Total Personnel Services – Employee Benefits	\$157,086.29	\$104,724.20	\$115.74	\$261,926.23
300 Purchased Professional and Technical Services				
322 Professional Educational Services – Ius	44,951.75	29,967.83		74,919.58
329 Professional Educational Services – Other	3,810.00	2,540.00		6,350.00
330 Other Professional Services	175,697.70	117,131.80		292,829.50
Total Purchased Professional and Technical Services	\$224,459.45	\$149,639.63		\$374,099.08
600 Supplies				
610 General Supplies	6,366.02	4,244.02		10,610.04
Total Supplies	\$6,366.02	\$4,244.02		\$10,610.04
Total 2140 Psychological Services	\$649,969.92	\$433,313.29	\$758.64	\$1,084,041.85

LEA : 123466403 Pottstown SD

Printed 12/22/2021 2:48:37 PM

General Fund (10)

	<u>Elementary</u>	<u>Secondary</u>	<u>Federal</u>	<u>Total</u>
2150 Speech Pathology and Audiology Services				
100 Personnel Services – Salaries				
100 Personnel Services – Salaries	237,787.06	158,524.70		396,311.76
Total Personnel Services – Salaries	\$237,787.06	\$158,524.70		\$396,311.76
200 Personnel Services – Employee Benefits				
210 Group Insurance – Contracted Provider	37,939.58	25,293.06		63,232.64
220 Social Security Contributions	17,626.16	11,750.77		29,376.93
230 PSERS Retirement Contributions	81,271.08	54,180.72		135,451.80
Total Personnel Services – Employee Benefits	\$136,836.82	\$91,224.55		\$228,061.37
600 Supplies				
610 General Supplies	2,563.41	1,708.94		4,272.35
Total Supplies	\$2,563.41	\$1,708.94		\$4,272.35
800 Other Objects				
810 Dues and Fees			551.00	551.00
Total Other Objects			\$551.00	\$551.00
Total 2150 Speech Pathology and Audiology Services	\$377,187.29	\$251,458.19	\$551.00	\$629,196.48

General Fund (10)

2160 Social Work Services

Elementary

Secondary

Federal

Total

100 Personnel Services – Salaries

100 Personnel Services – Salaries

45,077.68

Total Personnel Services – Salaries

\$45,077.68

200 Personnel Services – Employee Benefits

210 Group Insurance – Contracted Provider

12,481.99

220 Social Security Contributions

3,388.61

230 PSERS Retirement Contributions

15,419.75

Total Personnel Services – Employee Benefits

\$31,290.35

Total 2160 Social Work Services

\$76,368.03

General Fund (10)

2170 Student Accounting Services

Elementary Secondary Federal Total

100	<u>Personnel Services – Salaries</u>			
	100 Personnel Services – Salaries			49,788.37
Total Personnel Services – Salaries				\$49,788.37
200	<u>Personnel Services – Employee Benefits</u>			
	210 Group Insurance – Contracted Provider			15,786.37
	220 Social Security Contributions			3,649.33
	230 PSERS Retirement Contributions			17,181.90
Total Personnel Services – Employee Benefits				\$36,617.60
300	<u>Purchased Professional and Technical Services</u>			
	390 Other Purchased Professional and Technical Services			200.00
Total Purchased Professional and Technical Services				\$200.00
600	<u>Supplies</u>			
	610 General Supplies			9,843.97
Total Supplies				\$9,843.97
800	<u>Other Objects</u>			
	810 Dues and Fees			160.00
Total Other Objects				\$160.00
Total 2170 Student Accounting Services				\$96,609.94

LEA : 123466403 Pottstown SD

Printed 12/22/2021 2:48:37 PM

General Fund (10)

2200 Support Services – Instructional Staff

	<u>Elementary</u>	<u>Secondary</u>	<u>Federal</u>	<u>Total</u>
100 Personnel Services – Salaries				
100 Personnel Services – Salaries	481,721.88	321,147.92	121,686.57	924,556.37
Total Personnel Services – Salaries	\$481,721.88	\$321,147.92	\$121,686.57	\$924,556.37
200 Personnel Services – Employee Benefits				
210 Group Insurance – Contracted Provider	106,564.76	71,043.19	7,869.52	185,477.47
220 Social Security Contributions	35,866.67	23,911.12	9,112.85	68,890.64
230 PSERS Retirement Contributions	181,040.33	120,693.57	10,925.81	312,659.71
240 Tuition Reimbursement	43,746.00	29,164.00		72,910.00
250 Unemployment Compensation	207.10	138.07		345.17
Total Personnel Services – Employee Benefits	\$367,424.86	\$244,949.95	\$27,908.18	\$640,282.99
300 Purchased Professional and Technical Services				
322 Professional Educational Services – lus	62,424.00	41,616.00	5,805.00	109,845.00
329 Professional Educational Services – Other			8,070.00	8,070.00
360 Employee Training and Development Services	23,077.11	15,384.74	13,510.00	51,971.85
390 Other Purchased Professional and Technical Services	3,681.90	2,454.60		6,136.50
Total Purchased Professional and Technical Services	\$89,183.01	\$59,455.34	\$27,385.00	\$176,023.35
400 Purchased Property Services				
430 Repairs and Maintenance Services	17,088.73	11,392.49		28,481.22
440 Rentals	6,947.22	4,631.48		11,578.70
Total Purchased Property Services	\$24,035.95	\$16,023.97		\$40,059.92
500 Other Purchased Services				
530 Communications	2,939.75	1,959.83	19,079.47	23,979.05
580 Travel	1,023.25	682.17		1,705.42
Total Other Purchased Services	\$3,963.00	\$2,642.00	\$19,079.47	\$25,684.47
600 Supplies				
610 General Supplies	26,915.67	17,943.77	125,129.04	169,988.48
640 Books and Periodicals	11,406.93	7,604.63		19,011.56
650 Supplies & Fees – Technology Related	120,288.32	80,192.21	659,687.90	860,168.43
Total Supplies	\$158,610.92	\$105,740.61	\$784,816.94	\$1,049,168.47
700 Property				
756 Capitalized Technology Equipment – Original			175,578.41	175,578.41
790 Other Property	7,510.43	5,006.96		12,517.39
Total Property	\$7,510.43	\$5,006.96	\$175,578.41	\$188,095.80
800 Other Objects				
810 Dues and Fees	428.40	285.60		714.00
Total Other Objects	\$428.40	\$285.60		\$714.00
Total 2200 Support Services – Instructional Staff	\$1,132,878.45	\$755,252.35	\$1,156,454.57	\$3,044,585.37

General Fund (10)

	<u>Elementary</u>	<u>Secondary</u>	<u>Federal</u>	<u>Total</u>
2210 Supervision of Educational Media Services				
100 Personnel Services – Salaries				
100 Personnel Services – Salaries	44,195.99	29,464.00		73,659.99
Total Personnel Services – Salaries	\$44,195.99	\$29,464.00		\$73,659.99
200 Personnel Services – Employee Benefits				
210 Group Insurance – Contracted Provider	12,158.17	8,105.44		20,263.61
220 Social Security Contributions	3,309.32	2,206.22		5,515.54
230 PSERS Retirement Contributions	15,235.79	10,157.20		25,392.99
Total Personnel Services – Employee Benefits	\$30,703.28	\$20,468.86		\$51,172.14
300 Purchased Professional and Technical Services				
322 Professional Educational Services – Ius	62,424.00	41,616.00		104,040.00
Total Purchased Professional and Technical Services	\$62,424.00	\$41,616.00		\$104,040.00
500 Other Purchased Services				
530 Communications	2,175.39	1,450.26		3,625.65
Total Other Purchased Services	\$2,175.39	\$1,450.26		\$3,625.65
Total 2210 Supervision of Educational Media Services	\$139,498.66	\$92,999.12		\$232,497.78

General Fund (10)

2211 Supervision of Educational Media Services – Head of Component

	<u>Elementary</u>	<u>Secondary</u>	<u>Federal</u>	<u>Total</u>
100 Personnel Services – Salaries				
100 Personnel Services – Salaries	44,195.99	29,464.00		73,659.99
Total Personnel Services – Salaries	\$44,195.99	\$29,464.00		\$73,659.99
200 Personnel Services – Employee Benefits				
210 Group Insurance – Contracted Provider	12,158.17	8,105.44		20,263.61
220 Social Security Contributions	3,309.32	2,206.22		5,515.54
230 PSERS Retirement Contributions	15,235.79	10,157.20		25,392.99
Total Personnel Services – Employee Benefits	\$30,703.28	\$20,468.86		\$51,172.14
300 Purchased Professional and Technical Services				
322 Professional Educational Services – Ius	62,424.00	41,616.00		104,040.00
Total Purchased Professional and Technical Services	\$62,424.00	\$41,616.00		\$104,040.00
500 Other Purchased Services				
530 Communications	2,175.39	1,450.26		3,625.65
Total Other Purchased Services	\$2,175.39	\$1,450.26		\$3,625.65
Total 2211 Supervision of Educational Media Services – Head of Component	\$139,498.66	\$92,999.12		\$232,497.78

General Fund (10)

	<u>Elementary</u>	<u>Secondary</u>	<u>Federal</u>	<u>Total</u>
2220 Technology Support Services				
100 Personnel Services – Salaries				
100 Personnel Services – Salaries	110,835.95	73,890.63		184,726.58
Total Personnel Services – Salaries	\$110,835.95	\$73,890.63		\$184,726.58
200 Personnel Services – Employee Benefits				
210 Group Insurance – Contracted Provider	41,536.61	27,691.08		69,227.69
220 Social Security Contributions	7,974.16	5,316.10		13,290.26
230 PSERS Retirement Contributions	38,203.74	25,469.16		63,672.90
Total Personnel Services – Employee Benefits	\$87,714.51	\$58,476.34		\$146,190.85
500 Other Purchased Services				
530 Communications			17,639.47	17,639.47
580 Travel	1,023.25	682.17		1,705.42
Total Other Purchased Services	\$1,023.25	\$682.17	\$17,639.47	\$19,344.89
600 Supplies				
610 General Supplies	3,129.00	2,086.00	114,841.78	120,056.78
650 Supplies & Fees – Technology Related	19,465.15	12,976.76	71,467.42	103,909.33
Total Supplies	\$22,594.15	\$15,062.76	\$186,309.20	\$223,966.11
700 Property				
756 Capitalized Technology Equipment – Original			113,811.41	113,811.41
Total Property			\$113,811.41	\$113,811.41
Total 2220 Technology Support Services	\$222,167.86	\$148,111.90	\$317,760.08	\$688,039.84

General Fund (10)

	<u>Elementary</u>	<u>Secondary</u>	<u>Federal</u>	<u>Total</u>
2240 Computer-Assisted Instruction Support Services				
300 <u>Purchased Professional and Technical Services</u>				
390 Other Purchased Professional and Technical Services	322.50	215.00		537.50
Total Purchased Professional and Technical Services	\$322.50	\$215.00		\$537.50
400 <u>Purchased Property Services</u>				
430 Repairs and Maintenance Services	17,088.73	11,392.49		28,481.22
440 Rentals	6,947.22	4,631.48		11,578.70
Total Purchased Property Services	\$24,035.95	\$16,023.97		\$40,059.92
500 <u>Other Purchased Services</u>				
530 Communications			1,440.00	1,440.00
Total Other Purchased Services			\$1,440.00	\$1,440.00
600 <u>Supplies</u>				
610 General Supplies	16,511.40	11,007.60		27,519.00
640 Books and Periodicals	3,560.25	2,373.50		5,933.75
650 Supplies & Fees – Technology Related	100,823.17	67,215.45	588,220.48	756,259.10
Total Supplies	\$120,894.82	\$80,596.55	\$588,220.48	\$789,711.85
700 <u>Property</u>				
756 Capitalized Technology Equipment– Original			61,767.00	61,767.00
790 Other Property	7,510.43	5,006.96		12,517.39
Total Property	\$7,510.43	\$5,006.96	\$61,767.00	\$74,284.39
800 <u>Other Objects</u>				
810 Dues and Fees	150.00	100.00		250.00
Total Other Objects	\$150.00	\$100.00		\$250.00
Total 2240 Computer-Assisted Instruction Support Services	\$152,913.70	\$101,942.48	\$651,427.48	\$906,283.66

General Fund (10)

2250 School Library Services	<u>Elementary</u>	<u>Secondary</u>	<u>Federal</u>	<u>Total</u>
100 Personnel Services – Salaries				
100 Personnel Services – Salaries	173,616.41	115,744.27		289,360.68
Total Personnel Services – Salaries	\$173,616.41	\$115,744.27		\$289,360.68
200 Personnel Services – Employee Benefits				
210 Group Insurance – Contracted Provider	33,616.67	22,411.12		56,027.79
220 Social Security Contributions	12,815.45	8,543.64		21,359.09
230 PSERS Retirement Contributions	58,343.93	38,895.96		97,239.89
Total Personnel Services – Employee Benefits	\$104,776.05	\$69,850.72		\$174,626.77
600 Supplies				
610 General Supplies	4,076.20	2,717.46		6,793.66
640 Books and Periodicals	5,515.61	3,677.08		9,192.69
Total Supplies	\$9,591.81	\$6,394.54		\$15,986.35
Total 2250 School Library Services	\$287,984.27	\$191,989.53		\$479,973.80

General Fund (10)

	<u>Elementary</u>	<u>Secondary</u>	<u>Federal</u>	<u>Total</u>
2260 Instruction and Curriculum Development Services				
100 Personnel Services – Salaries				
100 Personnel Services – Salaries	145,341.55	96,894.37	28,980.00	271,215.92
Total Personnel Services – Salaries	\$145,341.55	\$96,894.37	\$28,980.00	\$271,215.92
200 Personnel Services – Employee Benefits				
210 Group Insurance – Contracted Provider	14,502.08	9,668.06		24,170.14
220 Social Security Contributions	11,176.24	7,450.83	2,213.04	20,840.11
230 PSERS Retirement Contributions	52,212.75	34,808.50	3,000.28	90,021.53
250 Unemployment Compensation	207.10	138.07		345.17
Total Personnel Services – Employee Benefits	\$78,098.17	\$52,065.46	\$5,213.32	\$135,376.95
300 Purchased Professional and Technical Services				
322 Professional Educational Services – Ius			5,805.00	5,805.00
329 Professional Educational Services – Other			8,070.00	8,070.00
390 Other Purchased Professional and Technical Services	3,359.40	2,239.60		5,599.00
Total Purchased Professional and Technical Services	\$3,359.40	\$2,239.60	\$13,875.00	\$19,474.00
500 Other Purchased Services				
530 Communications	764.36	509.57		1,273.93
Total Other Purchased Services	\$764.36	\$509.57		\$1,273.93
600 Supplies				
610 General Supplies	2,818.98	1,879.32	629.26	5,327.56
640 Books and Periodicals	2,331.07	1,554.05		3,885.12
Total Supplies	\$5,150.05	\$3,433.37	\$629.26	\$9,212.68
800 Other Objects				
810 Dues and Fees	278.40	185.60		464.00
Total Other Objects	\$278.40	\$185.60		\$464.00
Total 2260 Instruction and Curriculum Development Services	\$232,991.93	\$155,327.97	\$48,697.58	\$437,017.48

General Fund (10)

2270 Instructional Staff Professional Development Services

	<u>Elementary</u>	<u>Secondary</u>	<u>Federal</u>	<u>Total</u>
100 Personnel Services – Salaries				
100 Personnel Services – Salaries			92,706.57	92,706.57
Total Personnel Services – Salaries			\$92,706.57	\$92,706.57
200 Personnel Services – Employee Benefits				
210 Group Insurance – Contracted Provider	451.05	300.70	7,869.52	8,621.27
220 Social Security Contributions			6,899.81	6,899.81
230 PSERS Retirement Contributions	14,440.49	9,627.00	7,925.53	31,993.02
240 Tuition Reimbursement	43,746.00	29,164.00		72,910.00
Total Personnel Services – Employee Benefits	\$58,637.54	\$39,091.70	\$22,694.86	\$120,424.10
300 Purchased Professional and Technical Services				
360 Employee Training and Development Services	23,077.11	15,384.74	13,510.00	51,971.85
Total Purchased Professional and Technical Services	\$23,077.11	\$15,384.74	\$13,510.00	\$51,971.85
600 Supplies				
610 General Supplies	380.09	253.39	9,658.00	10,291.48
Total Supplies	\$380.09	\$253.39	\$9,658.00	\$10,291.48
Total 2270 Instructional Staff Professional Development Services	\$82,094.74	\$54,729.83	\$138,569.43	\$275,394.00

General Fund (10)

	<u>Elementary</u>	<u>Secondary</u>	<u>Federal</u>	<u>Total</u>
2290 Other Instructional Staff Services				
100 Personnel Services – Salaries				
100 Personnel Services – Salaries	7,731.98	5,154.65		12,886.63
Total Personnel Services – Salaries	\$7,731.98	\$5,154.65		\$12,886.63
200 Personnel Services – Employee Benefits				
210 Group Insurance – Contracted Provider	4,300.18	2,866.79		7,166.97
220 Social Security Contributions	591.50	394.33		985.83
230 PSERS Retirement Contributions	2,603.63	1,735.75		4,339.38
Total Personnel Services – Employee Benefits	\$7,495.31	\$4,996.87		\$12,492.18
Total 2290 Other Instructional Staff Services	\$15,227.29	\$10,151.52		\$25,378.81

General Fund (10)

	<u>Elementary</u>	<u>Secondary</u>	<u>Federal</u>	<u>Total</u>
2300 Support Services – Administration				
100 Personnel Services – Salaries				
100 Personnel Services – Salaries	763,254.55	508,836.36		1,630,065.42
Total Personnel Services – Salaries	\$763,254.55	\$508,836.36		\$1,630,065.42
200 Personnel Services – Employee Benefits				
210 Group Insurance – Contracted Provider	180,335.26	120,223.51		376,711.43
220 Social Security Contributions	56,668.92	37,779.28		118,443.84
230 PSERS Retirement Contributions	260,420.63	173,613.76		560,763.17
250 Unemployment Compensation	2,807.90	1,871.93		4,679.83
280 Other Post-Employment Benefits (OPEB)				3,854.40
299 All Other Employee Benefits				12,650.00
Total Personnel Services – Employee Benefits	\$500,232.71	\$333,488.48		\$1,077,102.67
300 Purchased Professional and Technical Services				
322 Professional Educational Services – Ius				2,000.00
329 Professional Educational Services – Other	12,139.93	8,093.29		20,233.22
330 Other Professional Services	4,916.64	3,277.76		400,943.22
390 Other Purchased Professional and Technical Services				48,206.17
Total Purchased Professional and Technical Services	\$17,056.57	\$11,371.05		\$471,382.61
400 Purchased Property Services				
440 Rentals	42,758.28	28,505.52		72,257.82
Total Purchased Property Services	\$42,758.28	\$28,505.52		\$72,257.82
500 Other Purchased Services				
520 Insurance – General				265,802.00
530 Communications	8,738.64	5,825.76		21,843.09
549 Other Advertising/Public Relations				4,834.61
550 Printing and Binding				30.73
580 Travel	275.74	183.82		459.56
Total Other Purchased Services	\$9,014.38	\$6,009.58		\$292,969.99
600 Supplies				
610 General Supplies	68,843.99	45,895.99		139,564.69
640 Books and Periodicals	142.80	95.20		238.00
650 Supplies & Fees – Technology Related				34,314.96
Total Supplies	\$68,986.79	\$45,991.19		\$174,117.65
800 Other Objects				
810 Dues and Fees	2,356.20	1,570.80		26,886.98
Total Other Objects	\$2,356.20	\$1,570.80		\$26,886.98
Total 2300 Support Services – Administration	\$1,403,659.48	\$935,772.98		\$3,744,783.14

General Fund (10)

2310 Board Services

Elementary

Secondary

Federal

Total

300 Purchased Professional and Technical Services

330 Other Professional Services

94,196.55

Total Purchased Professional and Technical Services

\$94,196.55

500 Other Purchased Services

520 Insurance – General

265,802.00

549 Other Advertising/Public Relations

4,834.61

Total Other Purchased Services

\$270,636.61

600 Supplies

610 General Supplies

2,700.00

Total Supplies

\$2,700.00

800 Other Objects

810 Dues and Fees

12,088.22

Total Other Objects

\$12,088.22

Total 2310 Board Services

\$379,621.38

LEA : 123466403 Pottstown SD

Printed 12/22/2021 2:48:37 PM

General Fund (10)

	<u>Elementary</u>	<u>Secondary</u>	<u>Federal</u>	<u>Total</u>
2330 Tax Assessment and Collection Services				
300 <u>Purchased Professional and Technical Services</u>				
330 Other Professional Services				284,387.13
390 Other Purchased Professional and Technical Services				48,206.17
Total Purchased Professional and Technical Services				\$332,593.30
400 <u>Purchased Property Services</u>				
440 Rentals				994.02
Total Purchased Property Services				\$994.02
500 <u>Other Purchased Services</u>				
530 Communications				6,055.80
Total Other Purchased Services				\$6,055.80
Total 2330 Tax Assessment and Collection Services				\$339,643.12

General Fund (10)

2340 Staff Relations and Negotiations Services

Elementary Secondary Federal Total

100	<u>Personnel Services – Salaries</u>			
	100 Personnel Services – Salaries			68,101.86
Total Personnel Services – Salaries				\$68,101.86
200	<u>Personnel Services – Employee Benefits</u>			
	210 Group Insurance – Contracted Provider			25,265.65
	220 Social Security Contributions			5,004.23
	230 PSERS Retirement Contributions			23,500.16
Total Personnel Services – Employee Benefits				\$53,770.04
500	<u>Other Purchased Services</u>			
	530 Communications			445.92
	550 Printing and Binding			30.73
Total Other Purchased Services				\$476.65
600	<u>Supplies</u>			
	610 General Supplies			13,535.99
	650 Supplies & Fees – Technology Related			31,246.96
Total Supplies				\$44,782.95
800	<u>Other Objects</u>			
	810 Dues and Fees			7,843.76
Total Other Objects				\$7,843.76
Total 2340 Staff Relations and Negotiations Services				\$174,975.26

LEA : 123466403 Pottstown SD

Printed 12/22/2021 2:48:37 PM

General Fund (10)

2350 Legal and Accounting Services

Elementary

Secondary

Federal

Total

300 Purchased Professional and Technical Services

330 Other Professional Services

14,165.14

Total Purchased Professional and Technical Services

\$14,165.14

Total 2350 Legal and Accounting Services

\$14,165.14

General Fund (10)

2360 Office of the Superintendent / Executive Director Services

	<u>Elementary</u>	<u>Secondary</u>	<u>Federal</u>	<u>Total</u>
100 Personnel Services – Salaries				
100 Personnel Services – Salaries				250,180.30
Total Personnel Services – Salaries				\$250,180.30
200 Personnel Services – Employee Benefits				
210 Group Insurance – Contracted Provider				44,123.90
220 Social Security Contributions				16,016.29
230 PSERS Retirement Contributions				89,788.29
280 Other Post-Employment Benefits (OPEB)				3,854.40
299 All Other Employee Benefits				12,650.00
Total Personnel Services – Employee Benefits				\$166,432.88
300 Purchased Professional and Technical Services				
322 Professional Educational Services – lus				2,000.00
Total Purchased Professional and Technical Services				\$2,000.00
500 Other Purchased Services				
530 Communications	882.69	588.46		1,471.15
Total Other Purchased Services	\$882.69	\$588.46		\$1,471.15
600 Supplies				
610 General Supplies				8,588.72
650 Supplies & Fees – Technology Related				3,068.00
Total Supplies				\$11,656.72
800 Other Objects				
810 Dues and Fees				2,743.00
Total Other Objects				\$2,743.00
Total 2360 Office of the Superintendent / Executive Director Services	\$882.69	\$588.46		\$434,484.05

General Fund (10)

2370 Community Relations Services

Elementary

Secondary

Federal

Total

100 Personnel Services – Salaries

100 Personnel Services – Salaries

39,692.35

Total Personnel Services – Salaries

\$39,692.35

200 Personnel Services – Employee Benefits

210 Group Insurance – Contracted Provider

6,763.11

220 Social Security Contributions

2,975.12

230 PSERS Retirement Contributions

13,440.33

Total Personnel Services – Employee Benefits

\$23,178.56

500 Other Purchased Services

530 Communications

776.97

Total Other Purchased Services

\$776.97

800 Other Objects

810 Dues and Fees

285.00

Total Other Objects

\$285.00

Total 2370 Community Relations Services

\$63,932.88

General Fund (10)

	<u>Elementary</u>	<u>Secondary</u>	<u>Federal</u>	<u>Total</u>
2380 Office of the Principal Services				
100 Personnel Services – Salaries				
100 Personnel Services – Salaries	763,254.55	508,836.36		1,272,090.91
Total Personnel Services – Salaries	\$763,254.55	\$508,836.36		\$1,272,090.91
200 Personnel Services – Employee Benefits				
210 Group Insurance – Contracted Provider	180,335.26	120,223.51		300,558.77
220 Social Security Contributions	56,668.92	37,779.28		94,448.20
230 PSERS Retirement Contributions	260,420.63	173,613.76		434,034.39
250 Unemployment Compensation	2,807.90	1,871.93		4,679.83
Total Personnel Services – Employee Benefits	\$500,232.71	\$333,488.48		\$833,721.19
300 Purchased Professional and Technical Services				
329 Professional Educational Services – Other	12,139.93	8,093.29		20,233.22
330 Other Professional Services	4,916.64	3,277.76		8,194.40
Total Purchased Professional and Technical Services	\$17,056.57	\$11,371.05		\$28,427.62
400 Purchased Property Services				
440 Rentals	42,758.28	28,505.52		71,263.80
Total Purchased Property Services	\$42,758.28	\$28,505.52		\$71,263.80
500 Other Purchased Services				
530 Communications	7,855.95	5,237.30		13,093.25
580 Travel	275.74	183.82		459.56
Total Other Purchased Services	\$8,131.69	\$5,421.12		\$13,552.81
600 Supplies				
610 General Supplies	68,843.99	45,895.99		114,739.98
640 Books and Periodicals	142.80	95.20		238.00
Total Supplies	\$68,986.79	\$45,991.19		\$114,977.98
800 Other Objects				
810 Dues and Fees	2,356.20	1,570.80		3,927.00
Total Other Objects	\$2,356.20	\$1,570.80		\$3,927.00
Total 2380 Office of the Principal Services	\$1,402,776.79	\$935,184.52		\$2,337,961.31

General Fund (10)

	<u>Elementary</u>	<u>Secondary</u>	<u>Federal</u>	<u>Total</u>
2400 Support Services – Pupil Health				
100 Personnel Services – Salaries				
100 Personnel Services – Salaries			61,273.48	532,319.57
Total Personnel Services – Salaries			\$61,273.48	\$532,319.57
200 Personnel Services – Employee Benefits				
210 Group Insurance – Contracted Provider			24,294.50	119,821.29
220 Social Security Contributions			4,480.19	38,896.14
230 PSERS Retirement Contributions			20,840.46	179,874.06
250 Unemployment Compensation				3,447.66
Total Personnel Services – Employee Benefits			\$49,615.15	\$342,039.15
300 Purchased Professional and Technical Services				
322 Professional Educational Services – Ius				10,000.81
323 Professional Educational Services – Other Educational Agencies				2,512.00
330 Other Professional Services			2,600.00	122,726.10
390 Other Purchased Professional and Technical Services				1,337.00
Total Purchased Professional and Technical Services			\$2,600.00	\$136,575.91
500 Other Purchased Services				
530 Communications				625.59
580 Travel				196.49
Total Other Purchased Services				\$822.08
600 Supplies				
610 General Supplies			454.87	24,802.83
Total Supplies			\$454.87	\$24,802.83
Total 2400 Support Services – Pupil Health			\$113,943.50	\$1,036,559.54

General Fund (10)

2420 Medical Services

	<u>Elementary</u>	<u>Secondary</u>	<u>Federal</u>	<u>Total</u>
100 Personnel Services – Salaries				
100 Personnel Services – Salaries			61,273.48	244,249.44
Total Personnel Services – Salaries			\$61,273.48	\$244,249.44
200 Personnel Services – Employee Benefits				
210 Group Insurance – Contracted Provider			24,294.50	82,168.84
220 Social Security Contributions			4,480.19	17,285.73
230 PSERS Retirement Contributions			20,840.46	84,290.49
Total Personnel Services – Employee Benefits			\$49,615.15	\$183,745.06
300 Purchased Professional and Technical Services				
322 Professional Educational Services – Ius				10,000.81
323 Professional Educational Services – Other Educational Agencies				2,512.00
330 Other Professional Services			2,600.00	119,200.50
390 Other Purchased Professional and Technical Services				1,337.00
Total Purchased Professional and Technical Services			\$2,600.00	\$133,050.31
500 Other Purchased Services				
530 Communications				625.59
580 Travel				196.49
Total Other Purchased Services				\$822.08
600 Supplies				
610 General Supplies				12,643.74
Total Supplies				\$12,643.74
Total 2420 Medical Services			\$113,488.63	\$574,510.63

LEA : 123466403 Pottstown SD

Printed 12/22/2021 2:48:37 PM

General Fund (10)

2430 Dental Services

300 Purchased Professional and Technical Services

330 Other Professional Services

Total Purchased Professional and Technical Services

Total 2430 Dental Services

Elementary

Secondary

Federal

Total

3,525.60

\$3,525.60

\$3,525.60

General Fund (10)

2440 Nursing Services

Elementary

Secondary

Federal

Total

100 Personnel Services – Salaries

100 Personnel Services – Salaries

288,070.13

Total Personnel Services – Salaries

\$288,070.13

200 Personnel Services – Employee Benefits

210 Group Insurance – Contracted Provider

37,652.45

220 Social Security Contributions

21,610.41

230 PSERS Retirement Contributions

95,583.57

250 Unemployment Compensation

3,447.66

Total Personnel Services – Employee Benefits

\$158,294.09

600 Supplies

610 General Supplies

454.87

12,159.09

Total Supplies

\$454.87

\$12,159.09

Total 2440 Nursing Services

\$454.87

\$458,523.31

General Fund (10)

	<u>Elementary</u>	<u>Secondary</u>	<u>Federal</u>	<u>Total</u>
2500 Support Services – Business				
100 Personnel Services – Salaries				
100 Personnel Services – Salaries			38,323.83	417,023.85
Total Personnel Services – Salaries			\$38,323.83	\$417,023.85
200 Personnel Services – Employee Benefits				
210 Group Insurance – Contracted Provider			11,310.51	86,053.64
220 Social Security Contributions			2,862.21	31,710.40
230 PSERS Retirement Contributions			4,758.94	147,607.17
299 All Other Employee Benefits				23,400.00
Total Personnel Services – Employee Benefits			\$18,931.66	\$288,771.21
300 Purchased Professional and Technical Services				
329 Professional Educational Services – Other				20,528.16
330 Other Professional Services			4,859.38	36,666.13
390 Other Purchased Professional and Technical Services			300.00	5,341.20
Total Purchased Professional and Technical Services			\$5,159.38	\$62,535.49
400 Purchased Property Services				
440 Rentals				33,201.19
Total Purchased Property Services				\$33,201.19
500 Other Purchased Services				
520 Insurance – General				4,357.01
530 Communications				15,543.69
Total Other Purchased Services				\$19,900.70
600 Supplies				
610 General Supplies				12,577.15
650 Supplies & Fees – Technology Related				4,380.84
Total Supplies				\$16,957.99
800 Other Objects				
810 Dues and Fees				1,736.81
890 Miscellaneous Expenditures				80.95
Total Other Objects				\$1,817.76
Total 2500 Support Services – Business			\$62,414.87	\$840,208.19

General Fund (10)

2510 Fiscal Services

	<u>Elementary</u>	<u>Secondary</u>	<u>Federal</u>	<u>Total</u>
100 Personnel Services – Salaries				
100 Personnel Services – Salaries			38,323.83	417,023.85
Total Personnel Services – Salaries			\$38,323.83	\$417,023.85
200 Personnel Services – Employee Benefits				
210 Group Insurance – Contracted Provider			11,310.51	86,053.64
220 Social Security Contributions			2,862.21	31,668.98
230 PSERS Retirement Contributions			4,758.94	147,607.17
299 All Other Employee Benefits				23,400.00
Total Personnel Services – Employee Benefits			\$18,931.66	\$288,729.79
300 Purchased Professional and Technical Services				
329 Professional Educational Services – Other				404.00
330 Other Professional Services			4,859.38	36,666.13
390 Other Purchased Professional and Technical Services			300.00	5,341.20
Total Purchased Professional and Technical Services			\$5,159.38	\$42,411.33
400 Purchased Property Services				
440 Rentals				6,081.12
Total Purchased Property Services				\$6,081.12
500 Other Purchased Services				
520 Insurance – General				4,357.01
530 Communications				15,543.69
Total Other Purchased Services				\$19,900.70
600 Supplies				
610 General Supplies				4,880.27
650 Supplies & Fees – Technology Related				4,380.84
Total Supplies				\$9,261.11
800 Other Objects				
810 Dues and Fees				1,736.81
890 Miscellaneous Expenditures				80.95
Total Other Objects				\$1,817.76
Total 2510 Fiscal Services			\$62,414.87	\$785,225.66

General Fund (10)

2511 Supervision of Fiscal Services - Head of Component

	<u>Elementary</u>	<u>Secondary</u>	<u>Federal</u>	<u>Total</u>
100 Personnel Services – Salaries				
100 Personnel Services – Salaries				195,306.01
Total Personnel Services – Salaries				\$195,306.01
200 Personnel Services – Employee Benefits				
210 Group Insurance – Contracted Provider				26,975.50
220 Social Security Contributions				14,591.36
230 PSERS Retirement Contributions				67,400.00
299 All Other Employee Benefits				23,400.00
Total Personnel Services – Employee Benefits				\$132,366.86
300 Purchased Professional and Technical Services				
330 Other Professional Services			4,859.38	8,759.38
390 Other Purchased Professional and Technical Services			300.00	300.00
Total Purchased Professional and Technical Services			\$5,159.38	\$9,059.38
600 Supplies				
610 General Supplies				220.62
Total Supplies				\$220.62
Total 2511 Supervision of Fiscal Services - Head of Component			\$5,159.38	\$336,952.87

General Fund (10)

2512 Budgeting Services

Elementary

Secondary

Federal

Total

100 Personnel Services – Salaries

100 Personnel Services – Salaries

62,529.57

Total Personnel Services – Salaries

\$62,529.57

200 Personnel Services – Employee Benefits

210 Group Insurance – Contracted Provider

18,334.32

220 Social Security Contributions

5,245.86

230 PSERS Retirement Contributions

25,271.21

Total Personnel Services – Employee Benefits

\$48,851.39

600 Supplies

610 General Supplies

251.48

Total Supplies

\$251.48

Total 2512 Budgeting Services

\$111,632.44

General Fund (10)

2513 Receiving and Disbursing Funds Services

Elementary

Secondary

Federal

Total

100 Personnel Services – Salaries

100 Personnel Services – Salaries

26,920.30

Total Personnel Services – Salaries

\$26,920.30

200 Personnel Services – Employee Benefits

210 Group Insurance – Contracted Provider

7,789.08

220 Social Security Contributions

1,990.76

230 PSERS Retirement Contributions

9,290.14

Total Personnel Services – Employee Benefits

\$19,069.98

600 Supplies

610 General Supplies

683.75

Total Supplies

\$683.75

Total 2513 Receiving and Disbursing Funds Services

\$46,674.03

General Fund (10)

2514 Payroll Services

	<u>Elementary</u>	<u>Secondary</u>	<u>Federal</u>	<u>Total</u>
100 Personnel Services – Salaries				
100 Personnel Services – Salaries			9,873.57	49,259.19
Total Personnel Services – Salaries			\$9,873.57	\$49,259.19
200 Personnel Services – Employee Benefits				
210 Group Insurance – Contracted Provider			2,736.62	14,548.12
220 Social Security Contributions			737.62	3,664.37
230 PSERS Retirement Contributions			1,022.07	16,999.44
Total Personnel Services – Employee Benefits			\$4,496.31	\$35,211.93
600 Supplies				
610 General Supplies				349.57
Total Supplies				\$349.57
800 Other Objects				
810 Dues and Fees				174.24
Total Other Objects				\$174.24
Total 2514 Payroll Services			\$14,369.88	\$84,994.93

LEA : 123466403 Pottstown SD

Printed 12/22/2021 2:48:37 PM

General Fund (10)

	<u>Elementary</u>	<u>Secondary</u>	<u>Federal</u>	<u>Total</u>
2515 Financial Accounting Services				
100 Personnel Services – Salaries				
100 Personnel Services – Salaries			28,450.26	83,008.78
Total Personnel Services – Salaries			\$28,450.26	\$83,008.78
200 Personnel Services – Employee Benefits				
210 Group Insurance – Contracted Provider			8,573.89	18,406.62
220 Social Security Contributions			2,124.59	6,176.63
230 PSERS Retirement Contributions			3,736.87	28,646.38
Total Personnel Services – Employee Benefits			\$14,435.35	\$53,229.63
300 Purchased Professional and Technical Services				
329 Professional Educational Services – Other				89.00
Total Purchased Professional and Technical Services				\$89.00
500 Other Purchased Services				
520 Insurance – General				4,357.01
Total Other Purchased Services				\$4,357.01
600 Supplies				
610 General Supplies				39.94
Total Supplies				\$39.94
Total 2515 Financial Accounting Services			\$42,885.61	\$140,724.36

General Fund (10)

2519 Other Fiscal Services

Elementary

Secondary

Federal

Total

300 Purchased Professional and Technical Services

329 Professional Educational Services – Other

315.00

330 Other Professional Services

27,906.75

390 Other Purchased Professional and Technical Services

5,041.20

Total Purchased Professional and Technical Services

\$33,262.95

400 Purchased Property Services

440 Rentals

6,081.12

Total Purchased Property Services

\$6,081.12

500 Other Purchased Services

530 Communications

15,543.69

Total Other Purchased Services

\$15,543.69

600 Supplies

610 General Supplies

3,334.91

650 Supplies & Fees – Technology Related

4,380.84

Total Supplies

\$7,715.75

800 Other Objects

810 Dues and Fees

1,562.57

890 Miscellaneous Expenditures

80.95

Total Other Objects

\$1,643.52

Total 2519 Other Fiscal Services

\$64,247.03

LEA : 123466403 Pottstown SD

Printed 12/22/2021 2:48:37 PM

General Fund (10)

2520 Purchasing Services

Elementary

Secondary

Federal

Total

600 Supplies

610 General Supplies

275.31

Total Supplies

\$275.31

Total 2520 Purchasing Services

\$275.31

LEA : 123466403 Pottstown SD

Printed 12/22/2021 2:48:37 PM

General Fund (10)

2530 Warehousing and Distributing Services

Elementary

Secondary

Federal

Total

300 Purchased Professional and Technical Services

329 Professional Educational Services – Other

20,124.16

Total Purchased Professional and Technical Services

\$20,124.16

Total 2530 Warehousing and Distributing Services

\$20,124.16

General Fund (10)

	<u>Elementary</u>	<u>Secondary</u>	<u>Federal</u>	<u>Total</u>
2540 Printing, Publishing and Duplicating Services				
200 Personnel Services – Employee Benefits				
220 Social Security Contributions				41.42
Total Personnel Services – Employee Benefits				\$41.42
400 Purchased Property Services				
440 Rentals				27,120.07
Total Purchased Property Services				\$27,120.07
600 Supplies				
610 General Supplies				7,421.57
Total Supplies				\$7,421.57
Total 2540 Printing, Publishing and Duplicating Services				\$34,583.06

General Fund (10)

2600 Operation and Maintenance of Plant Services

Elementary Secondary Federal Total

100	<u>Personnel Services – Salaries</u>					
	100 Personnel Services – Salaries					1,507,691.06
Total Personnel Services – Salaries						\$1,507,691.06
200	<u>Personnel Services – Employee Benefits</u>					
	210 Group Insurance – Contracted Provider					343,572.00
	220 Social Security Contributions					111,322.39
	230 PSERS Retirement Contributions					511,307.37
	250 Unemployment Compensation					28,412.39
Total Personnel Services – Employee Benefits						\$994,614.15
300	<u>Purchased Professional and Technical Services</u>					
	350 Security / Safety Services					145,651.55
	390 Other Purchased Professional and Technical Services					2,097.18
Total Purchased Professional and Technical Services						\$147,748.73
400	<u>Purchased Property Services</u>					
	410 Cleaning Services			800.00		195,559.73
	420 Utility Services					83,316.54
	430 Repairs and Maintenance Services			3,450.00		261,188.00
	440 Rentals					1,126.43
	460 Extermination Services					7,223.59
Total Purchased Property Services						\$4,250.00 \$548,414.29
500	<u>Other Purchased Services</u>					
	523 General Property and Liability Insurance					9,268.00
	529 Other Insurance					8,983.00
	530 Communications					70,795.01
Total Other Purchased Services						\$89,046.01
600	<u>Supplies</u>					
	610 General Supplies	261,182.40		174,121.59	251,349.03	686,653.02
	620 Energy					538,913.56
	650 Supplies & Fees – Technology Related					43,456.88
Total Supplies						\$261,182.40 \$174,121.59 \$251,349.03 \$1,269,023.46
700	<u>Property</u>					
	752 Capital Equipment – Original and Additional					82,391.35
	758 Capitalized Technology Software - Original					22,199.49
	762 Capitalized Equipment - Replacement					103,906.36
Total Property						\$208,497.20
800	<u>Other Objects</u>					
	810 Dues and Fees					2,348.89
Total Other Objects						\$2,348.89
Total 2600 Operation and Maintenance of Plant Services		\$261,182.40		\$174,121.59	\$255,599.03	\$4,767,383.79

General Fund (10)

2610 Supervision of Operation and Maintenance of Plant Services

	<u>Elementary</u>	<u>Secondary</u>	<u>Federal</u>	<u>Total</u>
100 Personnel Services – Salaries				
100 Personnel Services – Salaries				145,708.27
Total Personnel Services – Salaries				\$145,708.27
200 Personnel Services – Employee Benefits				
210 Group Insurance – Contracted Provider				33,621.87
220 Social Security Contributions				10,741.25
230 PSERS Retirement Contributions				50,263.34
Total Personnel Services – Employee Benefits				\$94,626.46
600 Supplies				
610 General Supplies	258.04	172.03		430.07
Total Supplies	\$258.04	\$172.03		\$430.07
Total 2610 Supervision of Operation and Maintenance of Plant Services	\$258.04	\$172.03		\$240,764.80

General Fund (10)

2611 Supervision of Operation and Maintenance of Plant Services – Head of Component

Elementary

Secondary

Federal

Total

100 Personnel Services – Salaries

100 Personnel Services – Salaries

145,648.60

Total Personnel Services – Salaries

\$145,648.60

200 Personnel Services – Employee Benefits

210 Group Insurance – Contracted Provider

33,621.87

220 Social Security Contributions

10,736.68

230 PSERS Retirement Contributions

50,263.34

Total Personnel Services – Employee Benefits

\$94,621.89

Total 2611 Supervision of Operation and Maintenance of Plant Services – Head of Component

\$240,270.49

General Fund (10)

	<u>Elementary</u>	<u>Secondary</u>	<u>Federal</u>	<u>Total</u>
2619 Supervision of Operation and Maintenance of Plant Services – All Other Supervision				
100 <u>Personnel Services – Salaries</u>				
100 Personnel Services – Salaries				59.67
Total Personnel Services – Salaries				\$59.67
200 <u>Personnel Services – Employee Benefits</u>				
220 Social Security Contributions				4.57
Total Personnel Services – Employee Benefits				\$4.57
600 <u>Supplies</u>				
610 General Supplies	258.04	172.03		430.07
Total Supplies	\$258.04	\$172.03		\$430.07
Total 2619 Supervision of Operation and Maintenance of Plant Services – All Other Supervision	\$258.04	\$172.03		\$494.31

General Fund (10)

2620 Operation of Buildings Services

100 Personnel Services – Salaries

100 Personnel Services – Salaries				1,132,174.98
-----------------------------------	--	--	--	--------------

Total Personnel Services – Salaries				\$1,132,174.98
--	--	--	--	-----------------------

200 Personnel Services – Employee Benefits

210 Group Insurance – Contracted Provider				261,838.25
---	--	--	--	------------

220 Social Security Contributions				83,526.56
-----------------------------------	--	--	--	-----------

230 PSERS Retirement Contributions				382,592.21
------------------------------------	--	--	--	------------

250 Unemployment Compensation				16,685.03
-------------------------------	--	--	--	-----------

Total Personnel Services – Employee Benefits				\$744,642.05
---	--	--	--	---------------------

300 Purchased Professional and Technical Services

350 Security / Safety Services				56,903.43
--------------------------------	--	--	--	-----------

390 Other Purchased Professional and Technical Services				2,097.18
---	--	--	--	----------

Total Purchased Professional and Technical Services				\$59,000.61
--	--	--	--	--------------------

400 Purchased Property Services

410 Cleaning Services			800.00	78,528.79
-----------------------	--	--	--------	-----------

420 Utility Services				83,316.54
----------------------	--	--	--	-----------

430 Repairs and Maintenance Services		3,450.00		256,937.72
--------------------------------------	--	----------	--	------------

440 Rentals				616.43
-------------	--	--	--	--------

460 Extermination Services				7,223.59
----------------------------	--	--	--	----------

Total Purchased Property Services			\$4,250.00	\$426,623.07
--	--	--	-------------------	---------------------

500 Other Purchased Services

530 Communications				70,795.01
--------------------	--	--	--	-----------

Total Other Purchased Services				\$70,795.01
---------------------------------------	--	--	--	--------------------

600 Supplies

610 General Supplies	228,153.83			631,305.51
----------------------	------------	--	--	------------

620 Energy		152,102.55		532,676.67
------------	--	------------	--	------------

650 Supplies & Fees – Technology Related			251,049.13	5,031.78
--	--	--	------------	----------

Total Supplies	\$228,153.83	\$152,102.55	\$251,049.13	\$1,169,013.96
-----------------------	---------------------	---------------------	---------------------	-----------------------

700 Property

758 Capitalized Technology Software - Original				22,199.49
--	--	--	--	-----------

762 Capitalized Equipment - Replacement				12,037.31
---	--	--	--	-----------

Total Property				\$34,236.80
-----------------------	--	--	--	--------------------

800 Other Objects

810 Dues and Fees				2,348.89
-------------------	--	--	--	----------

Total Other Objects				\$2,348.89
----------------------------	--	--	--	-------------------

Total 2620 Operation of Buildings Services	\$228,153.83	\$152,102.55	\$255,299.13	\$3,638,835.37
---	---------------------	---------------------	---------------------	-----------------------

General Fund (10)

	<u>Elementary</u>	<u>Secondary</u>	<u>Federal</u>	<u>Total</u>
2630 Care and Upkeep of Grounds Services				
100 Personnel Services – Salaries				
100 Personnel Services – Salaries				99,103.82
Total Personnel Services – Salaries				\$99,103.82
200 Personnel Services – Employee Benefits				
210 Group Insurance – Contracted Provider				31,062.43
220 Social Security Contributions				7,266.61
230 PSERS Retirement Contributions				34,200.71
Total Personnel Services – Employee Benefits				\$72,529.75
400 Purchased Property Services				
410 Cleaning Services				117,030.94
440 Rentals				510.00
Total Purchased Property Services				\$117,540.94
600 Supplies				
610 General Supplies	13,609.62	9,073.08		22,682.70
Total Supplies	\$13,609.62	\$9,073.08		\$22,682.70
700 Property				
752 Capital Equipment – Original and Additional				12,492.72
762 Capitalized Equipment - Replacement				2,109.05
Total Property				\$14,601.77
Total 2630 Care and Upkeep of Grounds Services	\$13,609.62	\$9,073.08		\$326,458.98

General Fund (10)

	<u>Elementary</u>	<u>Secondary</u>	<u>Federal</u>	<u>Total</u>
2640 Care and Upkeep of Equipment Services				
600 Supplies				
610 General Supplies	1,977.26	1,318.17		3,295.43
Total Supplies	\$1,977.26	\$1,318.17		\$3,295.43
700 Property				
752 Capital Equipment – Original and Additional				69,898.63
762 Capitalized Equipment - Replacement				89,760.00
Total Property				\$159,658.63
Total 2640 Care and Upkeep of Equipment Services	\$1,977.26	\$1,318.17		\$162,954.06

General Fund (10)

	<u>Elementary</u>	<u>Secondary</u>	<u>Federal</u>	<u>Total</u>
2650 Vehicle Operation and Maintenance Services (Other Than Student Transportation Vehicles)				
400 Purchased Property Services				
430 Repairs and Maintenance Services				4,250.28
Total Purchased Property Services				\$4,250.28
600 Supplies				
610 General Supplies	146.02	97.34	299.90	543.26
620 Energy				6,236.89
Total Supplies	\$146.02	\$97.34	\$299.90	\$6,780.15
Total 2650 Vehicle Operation and Maintenance Services (Other Than Student Transportation Vehicles)	\$146.02	\$97.34	\$299.90	\$11,030.43

General Fund (10)

2660 Safety and Security Services

100 Personnel Services – Salaries

100 Personnel Services – Salaries

130,703.99

Total Personnel Services – Salaries

\$130,703.99

200 Personnel Services – Employee Benefits

210 Group Insurance – Contracted Provider

17,049.45

220 Social Security Contributions

9,787.97

230 PSERS Retirement Contributions

44,251.11

250 Unemployment Compensation

11,727.36

Total Personnel Services – Employee Benefits

\$82,815.89

300 Purchased Professional and Technical Services

350 Security / Safety Services

88,748.12

Total Purchased Professional and Technical Services

\$88,748.12

600 Supplies

610 General Supplies

17,037.63

11,358.42

28,396.05

650 Supplies & Fees – Technology Related

38,425.10

Total Supplies

\$17,037.63

\$11,358.42

\$66,821.15

Total 2660 Safety and Security Services

\$17,037.63

\$11,358.42

\$369,089.15

LEA : 123466403 Pottstown SD

Printed 12/22/2021 2:48:37 PM

General Fund (10)

2690 Other Operation and Maintenance of Plant Services

Elementary

Secondary

Federal

Total

500 Other Purchased Services

523 General Property and Liability Insurance

9,268.00

529 Other Insurance

8,983.00

Total Other Purchased Services

\$18,251.00

Total 2690 Other Operation and Maintenance of Plant Services

\$18,251.00

General Fund (10)

2700 Student Transportation Services

Elementary Secondary Federal Total

200 Personnel Services – Employee Benefits

220	Social Security Contributions			62.13
250	Unemployment Compensation			4,539.42

Total Personnel Services – Employee Benefits **\$4,601.55**

300 Purchased Professional and Technical Services

322	Professional Educational Services – lus			73,470.96
-----	---	--	--	-----------

Total Purchased Professional and Technical Services **\$73,470.96**

500 Other Purchased Services

513	Contracted Carriers		982.68	994,937.27
516	Student Transportation Services From the IU			403,267.58
522	Automotive Liability Insurance			10,528.00

Total Other Purchased Services **\$982.68** **\$1,408,732.85**

600 Supplies

610	General Supplies		1,166.37	7,016.37
-----	------------------	--	----------	----------

Total Supplies **\$1,166.37** **\$7,016.37**

Total 2700 Student Transportation Services **\$2,149.05** **\$1,493,821.73**

LEA : 123466403 Pottstown SD

Printed 12/22/2021 2:48:37 PM

General Fund (10)

	<u>Elementary</u>	<u>Secondary</u>	<u>Federal</u>	<u>Total</u>
2710 Supervision of Student Transportation Services				
200 Personnel Services – Employee Benefits				
250 Unemployment Compensation				3.90
Total Personnel Services – Employee Benefits				\$3.90
300 Purchased Professional and Technical Services				
322 Professional Educational Services – Ius				73,470.96
Total Purchased Professional and Technical Services				\$73,470.96
500 Other Purchased Services				
513 Contracted Carriers			982.68	935,436.97
516 Student Transportation Services From the IU				403,267.58
522 Automotive Liability Insurance				10,528.00
Total Other Purchased Services			\$982.68	\$1,349,232.55
600 Supplies				
610 General Supplies			1,166.37	7,016.37
Total Supplies			\$1,166.37	\$7,016.37
Total 2710 Supervision of Student Transportation Services			\$2,149.05	\$1,429,723.78

General Fund (10)

	<u>Elementary</u>	<u>Secondary</u>	<u>Federal</u>	<u>Total</u>
2719 Supervision of Student Transportation Services – All Other Supervision				
200 Personnel Services – Employee Benefits				
250 Unemployment Compensation				3.90
Total Personnel Services – Employee Benefits				\$3.90
300 Purchased Professional and Technical Services				
322 Professional Educational Services – Ius				73,470.96
Total Purchased Professional and Technical Services				\$73,470.96
500 Other Purchased Services				
513 Contracted Carriers			982.68	935,436.97
516 Student Transportation Services From the IU				403,267.58
522 Automotive Liability Insurance				10,528.00
Total Other Purchased Services			\$982.68	\$1,349,232.55
600 Supplies				
610 General Supplies			1,166.37	7,016.37
Total Supplies			\$1,166.37	\$7,016.37
Total 2719 Supervision of Student Transportation Services – All Other Supervision			\$2,149.05	\$1,429,723.78

LEA : 123466403 Pottstown SD

Printed 12/22/2021 2:48:37 PM

General Fund (10)

2720 Vehicle Operation Services

Elementary

Secondary

Federal

Total

200 Personnel Services – Employee Benefits

220 Social Security Contributions

62.13

250 Unemployment Compensation

4,535.52

Total Personnel Services – Employee Benefits

\$4,597.65

Total 2720 Vehicle Operation Services

\$4,597.65

LEA : 123466403 Pottstown SD

Printed 12/22/2021 2:48:37 PM

General Fund (10)

2750 Nonpublic Transportation

Elementary

Secondary

Federal

Total

500 Other Purchased Services

513 Contracted Carriers

59,500.30

Total Other Purchased Services

\$59,500.30

Total 2750 Nonpublic Transportation

\$59,500.30

General Fund (10)

	<u>Elementary</u>	<u>Secondary</u>	<u>Federal</u>	<u>Total</u>
2800 Support Services – Central				
100 Personnel Services – Salaries				
100 Personnel Services – Salaries				308,899.89
Total Personnel Services – Salaries				\$308,899.89
200 Personnel Services – Employee Benefits				
210 Group Insurance – Contracted Provider				69,403.46
220 Social Security Contributions				22,649.48
230 PSERS Retirement Contributions				106,064.79
Total Personnel Services – Employee Benefits				\$198,117.73
300 Purchased Professional and Technical Services				
329 Professional Educational Services – Other				1,456.00
330 Other Professional Services				1,176.00
Total Purchased Professional and Technical Services				\$2,632.00
500 Other Purchased Services				
530 Communications				745.59
Total Other Purchased Services				\$745.59
600 Supplies				
610 General Supplies				616.86
650 Supplies & Fees – Technology Related				79,457.07
Total Supplies				\$80,073.93
Total 2800 Support Services – Central				\$590,469.14

General Fund (10)

2830 Staff Services

	<u>Elementary</u>	<u>Secondary</u>	<u>Federal</u>	<u>Total</u>
100 Personnel Services – Salaries				
100 Personnel Services – Salaries				176,830.68
Total Personnel Services – Salaries				\$176,830.68
200 Personnel Services – Employee Benefits				
210 Group Insurance – Contracted Provider				21,661.27
220 Social Security Contributions				12,958.64
230 PSERS Retirement Contributions				60,487.69
Total Personnel Services – Employee Benefits				\$95,107.60
300 Purchased Professional and Technical Services				
329 Professional Educational Services – Other				1,456.00
330 Other Professional Services				1,176.00
Total Purchased Professional and Technical Services				\$2,632.00
500 Other Purchased Services				
530 Communications				745.59
Total Other Purchased Services				\$745.59
600 Supplies				
610 General Supplies				616.86
650 Supplies & Fees – Technology Related				2,627.83
Total Supplies				\$3,244.69
Total 2830 Staff Services				\$278,560.56

General Fund (10)

2831 Supervision of Staff Services

Elementary

Secondary

Federal

Total

100 Personnel Services – Salaries

100 Personnel Services – Salaries

176,830.68

Total Personnel Services – Salaries

\$176,830.68

200 Personnel Services – Employee Benefits

210 Group Insurance – Contracted Provider

21,661.27

220 Social Security Contributions

12,958.64

230 PSERS Retirement Contributions

60,487.69

Total Personnel Services – Employee Benefits

\$95,107.60

300 Purchased Professional and Technical Services

329 Professional Educational Services – Other

1,456.00

330 Other Professional Services

1,176.00

Total Purchased Professional and Technical Services

\$2,632.00

500 Other Purchased Services

530 Communications

745.59

Total Other Purchased Services

\$745.59

600 Supplies

610 General Supplies

47.86

650 Supplies & Fees – Technology Related

2,627.83

Total Supplies

\$2,675.69

Total 2831 Supervision of Staff Services

\$277,991.56

LEA : 123466403 Pottstown SD

Printed 12/22/2021 2:48:37 PM

General Fund (10)

2832 Recruitment and Placement Services

Elementary

Secondary

Federal

Total

600 Supplies

610 General Supplies

569.00

Total Supplies **\$569.00**

Total 2832 Recruitment and Placement Services **\$569.00**

General Fund (10)

2840 Data Processing Services

Elementary

Secondary

Federal

Total

100 Personnel Services – Salaries

100 Personnel Services – Salaries

132,069.21

Total Personnel Services – Salaries

\$132,069.21

200 Personnel Services – Employee Benefits

210 Group Insurance – Contracted Provider

47,742.19

220 Social Security Contributions

9,690.84

230 PSERS Retirement Contributions

45,577.10

Total Personnel Services – Employee Benefits

\$103,010.13

600 Supplies

650 Supplies & Fees – Technology Related

76,829.24

Total Supplies

\$76,829.24

Total 2840 Data Processing Services

\$311,908.58

LEA : 123466403 Pottstown SD

Printed 12/22/2021 2:48:37 PM

General Fund (10)

2900 Other Support Services

Elementary

Secondary

Federal

Total

500 Other Purchased Services

595 IU Payments By Withholding

16,252.11

Total Other Purchased Services

\$16,252.11

Total 2900 Other Support Services

\$16,252.11

LEA : 123466403 Pottstown SD

Printed 12/22/2021 2:48:37 PM

General Fund (10)

2910 Support Services Not Listed Elsewhere In the 2000 Series

Elementary

Secondary

Federal

Total

500 Other Purchased Services

595 IU Payments By Withholding

16,252.11

Total Other Purchased Services

\$16,252.11

Total 2910 Support Services Not Listed Elsewhere In the 2000 Series

\$16,252.11

LEA : 123466403 Pottstown SD

Printed 12/22/2021 2:48:46 PM

General Fund (10)

3000 Operation of Non-Instructional Services	<u>Total</u>
100 Personnel Services – Salaries	
100 Personnel Services – Salaries	507,892.63
Total Personnel Services – Salaries	\$507,892.63
200 Personnel Services – Employee Benefits	
210 Group Insurance – Contracted Provider	28,698.49
220 Social Security Contributions	39,534.64
230 PSERS Retirement Contributions	167,558.20
250 Unemployment Compensation	625.38
Total Personnel Services – Employee Benefits	\$236,416.71
300 Purchased Professional and Technical Services	
330 Other Professional Services	55,233.17
350 Security / Safety Services	1,936.00
390 Other Purchased Professional and Technical Services	79,871.44
Total Purchased Professional and Technical Services	\$137,040.61
400 Purchased Property Services	
440 Rentals	3,098.52
Total Purchased Property Services	\$3,098.52
500 Other Purchased Services	
510 Student Transportation Services	21,141.83
520 Insurance – General	2,442.92
530 Communications	1,105.71
580 Travel	2,223.83
Total Other Purchased Services	\$26,914.29
600 Supplies	
610 General Supplies	156,255.49
Total Supplies	\$156,255.49
700 Property	
752 Capital Equipment – Original and Additional	9,965.00
Total Property	\$9,965.00
800 Other Objects	
810 Dues and Fees	6,747.70
860 Grants To Municipal and Community Service Organizations	41,500.00
Total Other Objects	\$48,247.70
Total 3000 Operation of Non-Instructional Services	\$1,125,830.95

General Fund (10)

3200 Student Activities

	<u>Elementary</u>	<u>Secondary</u>	<u>Federal</u>	<u>Total</u>
100 Personnel Services – Salaries				
100 Personnel Services – Salaries				496,040.13
Total Personnel Services – Salaries				\$496,040.13
200 Personnel Services – Employee Benefits				
210 Group Insurance – Contracted Provider				28,677.85
220 Social Security Contributions				37,544.79
230 PSERS Retirement Contributions				163,467.89
250 Unemployment Compensation				625.38
Total Personnel Services – Employee Benefits				\$230,315.91
300 Purchased Professional and Technical Services				
330 Other Professional Services				276.00
350 Security / Safety Services				1,936.00
390 Other Purchased Professional and Technical Services				18,766.15
Total Purchased Professional and Technical Services				\$20,978.15
400 Purchased Property Services				
440 Rentals				3,098.52
Total Purchased Property Services				\$3,098.52
500 Other Purchased Services				
510 Student Transportation Services				21,141.83
520 Insurance – General				2,442.92
530 Communications				1,105.71
580 Travel				2,223.83
Total Other Purchased Services				\$26,914.29
600 Supplies				
610 General Supplies			23,044.72	156,255.49
Total Supplies			\$23,044.72	\$156,255.49
700 Property				
752 Capital Equipment – Original and Additional				9,965.00
Total Property				\$9,965.00
800 Other Objects				
810 Dues and Fees				6,747.70
Total Other Objects				\$6,747.70
Total 3200 Student Activities			\$23,044.72	\$950,315.19

LEA : 123466403 Pottstown SD

Printed 12/22/2021 2:48:46 PM

General Fund (10)

3300 Community Services

Elementary Secondary Federal Total

100 Personnel Services – Salaries

100 Personnel Services – Salaries 11,852.50

Total Personnel Services – Salaries \$11,852.50

200 Personnel Services – Employee Benefits

210 Group Insurance – Contracted Provider 20.64

220 Social Security Contributions 1,989.85

230 PSERS Retirement Contributions 4,090.31

Total Personnel Services – Employee Benefits \$6,100.80

300 Purchased Professional and Technical Services

330 Other Professional Services 54,957.17 54,957.17

390 Other Purchased Professional and Technical Services 13,145.29 61,105.29

Total Purchased Professional and Technical Services \$68,102.46 \$116,062.46

800 Other Objects

860 Grants To Municipal and Community Service Organizations 41,500.00

Total Other Objects \$41,500.00

Total 3300 Community Services \$68,102.46 \$175,515.76

General Fund (10)

4000 Facilities Acquisition, Construction and Improvement Services

Total

400 Purchased Property Services

450 Construction Services

1,923,257.91

Total Purchased Property Services

\$1,923,257.91

Total 4000 Facilities Acquisition, Construction and Improvement Services

\$1,923,257.91

LEA : 123466403 Pottstown SD

Printed 12/22/2021 2:48:53 PM

General Fund (10)

	<u>Elementary</u>	<u>Secondary</u>	<u>Federal</u>	<u>Total</u>
4600 Existing Building Improvement Services				
400 <u>Purchased Property Services</u>				
450 Construction Services			1,225,772.90	1,923,257.91
Total Purchased Property Services			\$1,225,772.90	\$1,923,257.91
Total 4600 Existing Building Improvement Services			\$1,225,772.90	\$1,923,257.91

General Fund (10)

5000 Other Expenditures and Financing Uses

Total

800 Other Objects

830 Interest 1,218,330.94

880 Refunds of Prior Years' Receipts 91,671.74

Total Other Objects \$1,310,002.68

900 Other Uses of Funds

910 Redemption of Principal 2,220,894.82

Total Other Uses of Funds \$2,220,894.82

Total 5000 Other Expenditures and Financing Uses \$3,530,897.50

General Fund (10)

5100 Debt Service / Other Expenditures and Financing Uses	<u>Elementary</u>	<u>Secondary</u>	<u>Federal</u>	<u>Total</u>
800 Other Objects				
830 Interest				1,218,330.94
880 Refunds of Prior Years' Receipts				91,671.74
Total Other Objects				\$1,310,002.68
900 Other Uses of Funds				
910 Redemption of Principal				2,220,894.82
Total Other Uses of Funds				\$2,220,894.82
Total 5100 Debt Service / Other Expenditures and Financing Uses				\$3,530,897.50

LEA : 123466403 Pottstown SD

Printed 12/22/2021 2:48:58 PM

General Fund (10)

	<u>Elementary</u>	<u>Secondary</u>	<u>Federal</u>	<u>Total</u>
5110 Debt Service				
800 Other Objects				
830 Interest				1,218,330.94
Total Other Objects				\$1,218,330.94
900 Other Uses of Funds				
910 Redemption of Principal				2,220,894.82
Total Other Uses of Funds				\$2,220,894.82
Total 5110 Debt Service				\$3,439,225.76

LEA : 123466403 Pottstown SD

Printed 12/22/2021 2:48:58 PM

General Fund (10)

5130 Refund of Prior Year Revenues / Receipts

Elementary

Secondary

Federal

Total

800 Other Objects

880 Refunds of Prior Years' Receipts

91,671.74

Total Other Objects

\$91,671.74

Total 5130 Refund of Prior Year Revenues / Receipts

\$91,671.74

LEA : 123466403 Pottstown SD

Printed 12/22/2021 2:48:49 PM

Athletic / School-Sponsored Extra Curricular Activities Fund (29)

3000 Operation of Non-Instructional Services

Total

300 Purchased Professional and Technical Services

390 Other Purchased Professional and Technical Services

16,427.11

Total Purchased Professional and Technical Services

\$16,427.11

Total 3000 Operation of Non-Instructional Services

\$16,427.11

LEA : 123466403 Pottstown SD

Printed 12/22/2021 2:48:49 PM

Athletic / School-Sponsored Extra Curricular Activities Fund (29)

3200 Student Activities

Elementary

Secondary

Federal

Total

300 Purchased Professional and Technical Services

390 Other Purchased Professional and Technical Services

16,427.11

Total Purchased Professional and Technical Services

\$16,427.11

Total 3200 Student Activities

\$16,427.11

LEA : 123466403 Pottstown SD

Printed 12/22/2021 2:48:59 PM

Debt Service Fund (40)

5000 Other Expenditures and Financing Uses

800 Other Objects

830 Interest	8,602.00
--------------	----------

Total Other Objects	\$8,602.00
----------------------------	-------------------

Total 5000 Other Expenditures and Financing Uses	\$8,602.00
---	-------------------

LEA : 123466403 Pottstown SD

Printed 12/22/2021 2:48:59 PM

Debt Service Fund (40)

5100 Debt Service / Other Expenditures and Financing Uses

Elementary

Secondary

Federal

Total

800 Other Objects

830 Interest

8,602.00

Total Other Objects

\$8,602.00

Total 5100 Debt Service / Other Expenditures and Financing Uses

\$8,602.00

LEA : 123466403 Pottstown SD

Printed 12/22/2021 2:48:59 PM

Debt Service Fund (40)

	<u>Elementary</u>	<u>Secondary</u>	<u>Federal</u>	<u>Total</u>
5110 Debt Service				
800 <u>Other Objects</u>				
830 Interest				8,602.00
Total Other Objects				\$8,602.00
Total 5110 Debt Service				\$8,602.00

	<u>General Fund(10)</u>	<u>Student Sponsored Activity Fund(21)</u>	<u>Public Purpose Trust(27)</u>	<u>Other Compt Approved (28)</u>	<u>Athletic / Activity(29)</u>
1000 Instruction					
1100 Regular Programs - Elementary / Secondary	21,252,700.08				
1200 Special Programs - Elementary / Secondary	13,485,104.50				
1300 Vocational Education	1,423,020.00				
1400 Other Instructional Programs - Elementary / Secondary	1,591,102.25				
1500 Nonpublic School Programs	14,595.69				
1800 Pre-Kindergarten	2,866,898.83				
Total Instruction	\$40,633,421.35				
2000 Support Services					
2100 Support Services - Students	2,543,579.33				
2200 Support Services - Instructional Staff	3,044,585.37				
2300 Support Services - Administration	3,744,783.14				
2400 Support Services - Pupil Health	1,036,559.54				
2500 Support Services - Business	840,208.19				
2600 Operation and Maintenance of Plant Services	4,767,383.79				
2700 Student Transportation Services	1,493,821.73				
2800 Support Services - Central	590,469.14				
2900 Other Support Services	16,252.11				
Total Support Services	\$18,077,642.34				
3000 Operation of Non-Instructional Services					
3200 Student Activities	950,315.19				16,427.11
3300 Community Services	175,515.76				
Total Operation of Non-Instructional Services	\$1,125,830.95				\$16,427.11
4000 Facilities Acquisition, Construction and Improvement Services					
4600 Existing Building Improvement Services	1,923,257.91				
Total Facilities Acquisition, Construction and Improvement Services	\$1,923,257.91				
5000 Other Expenditures and Financing Uses					
5100 Debt Service / Other Expenditures and Financing Uses	3,530,897.50				
Total Other Expenditures and Financing Uses	\$3,530,897.50				
TOTAL ACTUAL EXPENDITURES & OTHER FINANCING USES	\$65,291,050.05				\$16,427.11

<u>Capital Reserve (690.</u>	<u>Capital Reserve (1431)(32)</u>	<u>Other Capital Projects</u>	<u>Debt Service(40)</u>	<u>Permanent(90)</u>
<u>1850)(31)</u>		<u>Fund(39)</u>		

- 1000 Instruction**
- 1100 Regular Programs - Elementary / Secondary
- 1200 Special Programs - Elementary / Secondary
- 1300 Vocational Education
- 1400 Other Instructional Programs - Elementary / Secondary
- 1500 Nonpublic School Programs
- 1800 Pre-Kindergarten

Total Instruction

- 2000 Support Services**
- 2100 Support Services - Students
- 2200 Support Services - Instructional Staff
- 2300 Support Services - Administration
- 2400 Support Services - Pupil Health
- 2500 Support Services - Business
- 2600 Operation and Maintenance of Plant Services
- 2700 Student Transportation Services
- 2800 Support Services - Central
- 2900 Other Support Services

Total Support Services

- 3000 Operation of Non-Instructional Services**
- 3200 Student Activities
- 3300 Community Services

Total Operation of Non-Instructional Services

- 4000 Facilities Acquisition, Construction and Improvement Services**
- 4600 Existing Building Improvement Services

Total Facilities Acquisition, Construction and Improvement Services

- 5000 Other Expenditures and Financing Uses**
- 5100 Debt Service / Other Expenditures and Financing Uses

Total Other Expenditures and Financing Uses	8,602.00
TOTAL ACTUAL EXPENDITURES & OTHER FINANCING USES	\$8,602.00

Total

1000 <u>Instruction</u>	
1100 Regular Programs - Elementary / Secondary	21,252,700.08
1200 Special Programs - Elementary / Secondary	13,485,104.50
1300 Vocational Education	1,423,020.00
1400 Other Instructional Programs - Elementary / Secondary	1,591,102.25
1500 Nonpublic School Programs	14,595.69
1800 Pre-Kindergarten	2,866,898.83
Total Instruction	\$40,633,421.35
2000 <u>Support Services</u>	
2100 Support Services - Students	2,543,579.33
2200 Support Services - Instructional Staff	3,044,585.37
2300 Support Services - Administration	3,744,783.14
2400 Support Services - Pupil Health	1,036,559.54
2500 Support Services - Business	840,208.19
2600 Operation and Maintenance of Plant Services	4,767,383.79
2700 Student Transportation Services	1,493,821.73
2800 Support Services - Central	590,469.14
2900 Other Support Services	16,252.11
Total Support Services	\$18,077,642.34
3000 <u>Operation of Non-Instructional Services</u>	
3200 Student Activities	966,742.30
3300 Community Services	175,515.76
Total Operation of Non-Instructional Services	\$1,142,258.06
4000 <u>Facilities Acquisition, Construction and Improvement Services</u>	
4600 Existing Building Improvement Services	1,923,257.91
Total Facilities Acquisition, Construction and Improvement Services	\$1,923,257.91
5000 <u>Other Expenditures and Financing Uses</u>	
5100 Debt Service / Other Expenditures and Financing Uses	3,539,499.50
Total Other Expenditures and Financing Uses	\$3,539,499.50
TOTAL ACTUAL EXPENDITURES & OTHER FINANCING USES	\$65,316,079.16

LEA : 123466403 Pottstown SD

Printed 12/22/2021 2:49:29 PM

PSERS Salary Data (Salary Data should relate to the General Fund only)

Amount Description	Amount
Total Salary Base for salaries subject to PSERS withholding	23,877,917.48
Total Federally Funded salaries subject to PSERS withholding	1,795,683.85
	<hr/>

Title I Expenditure Data

Amount Description	Amount
Expenditures Funded with Current Title I Funds	1,305,101.00
Expenditures Funded with Carry over Title I Funds	13,145.00
Total Title I Expenditure Data	\$1,318,246.00
	<hr/>

Title IV Revenue Data

Amount Description	Amount
Revenue from Title IV-A-1: Student Support and Academic Enrichment Grants	100,123.00
Revenue from Title IV-B: 21st Century Community Learning Centers	424,585.10
	<hr/>

Title V Revenue Data

Amount Description	Amount
Revenue from Title V-B-2: Rural and Low-Income School Programs	
Revenue from Title V-B-1: Small Rural School Achievement (Directly from the Federal Govt)	
	<hr/>

- 1. Current Special Education Expenditures/Expenses within Functions 1000, 2000, 3100, and 3200 13,485,104.56
- 2. Current Special Education Expenditures for Instruction Functions 1000 and 3200
- 3. Current Special Education Expenditures for Pupil Support Services Function 2100
- 4. Current Special Education Expenditures for Instructional Staff Support Services Function 2200
- 5. Current Special Education Expenditures for Student Transportation Support Services Function 2700

Note: Do not report total Special Education expenditures for the functions listed above. Refer to the AFR User Manual for specific instructions on Funds/Functions/Objects to be included and excluded on each line.

Benefits for Staff Relative to Collective Bargaining Agreements

	OBJECT	COVERED	NOT COVERED	TOTAL
10 General Fund				
	211 Medical Insurance			
	212 Dental Insurance	134,736.93	203,786.74	338,523.67
	215 Eye Care Insurance	3,516.87	18,763.03	22,279.90
	216 Prescription Insurance			
	271 Self-Insurance Medical Benefits	2,735,532.48	1,365,312.75	4,100,845.23
	272 Self-Insurance Dental Benefits			
	275 Self-Insurance Eye Care Benefits			
	276 Self-Insurance Prescription Benefits	720,297.77	627,721.84	1,348,019.61
	FUND TOTAL	\$3,594,084.05	\$2,215,584.36	\$5,809,668.41
50 Enterprise Fund				
	211 Medical Insurance			
	212 Dental Insurance	13,424.17		13,424.17
	215 Eye Care Insurance	677.22		677.22
	216 Prescription Insurance			
	271 Self-Insurance Medical Benefits	112,161.27		112,161.27
	272 Self-Insurance Dental Benefits			
	275 Self-Insurance Eye Care Benefits			
	276 Self-Insurance Prescription Benefits	37,670.11		37,670.11
	FUND TOTAL	\$163,932.77		\$163,932.77
60 Internal Service Fund	No Self Insurance data to report			
	211 Medical Insurance			
	212 Dental Insurance			
	215 Eye Care Insurance			
	216 Prescription Insurance			
	271 Self-Insurance Medical Benefits			
	272 Self-Insurance Dental Benefits			
	275 Self-Insurance Eye Care Benefits			
	276 Self-Insurance Prescription Benefits			
	FUND TOTAL			
Total of All Funds		\$3,758,016.82	\$2,215,584.36	\$5,973,601.18

LEA : 123466403 Pottstown SD

Printed 12/22/2021 2:49:39 PM

Function	Special Education (Prior Year)	Nonspecial Education (Prior Year)	Total (Prior Year)	Special Education (Current Year)	Nonspecial Education (Current Year)	Total (Current Year)
2120 Guidance Services		492,849.57	492,849.57		574,918.70	574,918.70
2140 Psychological Services	746,753.21	186,688.31	933,441.52	867,233.49	216,808.36	1,084,041.85
2150 Speech Pathology and Audiology Services	620,335.30		620,335.30	629,196.48		629,196.48
2160 Social Work Services	30,600.70	20,400.47	51,001.17	45,820.82	30,547.21	76,368.03
2260 Instruction and Curriculum Development Services		327,853.18	327,853.18		437,017.48	437,017.48
2350 Legal and Accounting Services		14,557.94	14,557.94		14,165.14	14,165.14
2420 Medical Services	533,977.92	5,264.46	539,242.38	568,901.85	5,608.78	574,510.63
2440 Nursing Services		452,758.99	452,758.99		458,523.31	458,523.31
2700 Student Transportation Services	1,441,070.51	569,139.26	2,010,209.77	1,024,098.08	404,459.33	1,428,557.41
Total	\$3,372,737.64	\$2,069,512.18	\$5,442,249.82	\$3,135,250.72	\$2,142,048.31	\$5,277,299.03

(PRINCIPAL AMOUNTS ONLY)

GOVERNMENTAL FUNDS/ ACTIVITIES

	Short-Term Borrowing	General Obligation Bonds/Notes	Authority Building Obligations	Other Long-Term Debt	Other Post-Employment Benefits (OPEB)	Compensated Absences	Net Pension Liability	Total
1. Debt at Beginning of Fiscal Year		44,796,894.82			11,400,530.00	506,558.00	80,804,911.00	137,508,893.82
2. Additional Debt Incurred During Year					191,860.00	438,814.00	10,382,536.00	11,013,210.00
3. Retirements and Repayments		2,220,894.82			2,795,419.00	362,830.00	7,968,962.00	13,348,105.82
4. Debt at End of Fiscal Year		42,576,000.00			8,796,971.00	582,542.00	83,218,485.00	135,173,998.00
5. Accreted Interest at End Of Fiscal Year								
6. Total Debt and Accreted Interest		42,576,000.00			8,796,971.00	582,542.00	83,218,485.00	135,173,998.00
7. Current Portion P&I - Due within 1 year		2,546,000.00						2,546,000.00
8. Interest Paid during current fiscal year		1,226,933.00						1,226,933.00

(PRINCIPAL AMOUNTS ONLY)

PROPRIETARY FUNDS

	Short-Term Borrowing	General Obligation Bonds/Notes	Authority Building Obligations	Other Long-Term Debt	Other Post-Employment Benefits (OPEB)	Compensated Absences	Net Pension Liability	Total
1. Debt at Beginning of Fiscal Year					257,510.00	21,497.00	1,953,089.00	2,232,096.00
2. Additional Debt Incurred During Year					5,195.00	4,221.00	145,946.00	155,362.00
3. Retirements and Repayments					24,715.00	4,582.00	183,520.00	212,817.00
4. Debt at End of Fiscal Year					237,990.00	21,136.00	1,915,515.00	2,174,641.00
5. Accreted Interest at End Of Fiscal Year								
6. Total Debt and Accreted Interest					237,990.00	21,136.00	1,915,515.00	2,174,641.00
7. Current Portion P&I - Due within 1 year								
8. Interest Paid during current fiscal year								

Total Principal and Interest Payments Made by Your School - All Funds

Function	Fund		Principal (910)	Principal (920)	Interest (830)	Total (Principal +Interest)	Misc Other Uses (990)
5110	10	General Fund	2,220,894.82		1,218,330.94	3,439,225.76	
5110	20	Special Revenue Funds					
5110	30	Capital Projects Funds					
5110	40	Debt Service Fund			8,602.00	8,602.00	
5110	90	Permanent Fund					
5120	10	General Fund					
5120	20	Special Revenue Funds					
5120	30	Capital Projects Funds					
5120	40	Debt Service Fund					

Total Debt Payments - Governmental Funds			\$2,220,894.82		\$1,226,932.94	\$3,447,827.76	
---	--	--	-----------------------	--	-----------------------	-----------------------	--

Function	Fund		Principal (910)	Principal (920)	Interest (830)	Total (Principal +Interest)
5110	50	Enterprise Fund				
5110	60	Internal Service Fund				
5120	50	Enterprise Fund				
5120	60	Internal Service Fund				

Total Debt Payments - Proprietary Funds						
--	--	--	--	--	--	--

LEA : 123466403 Pottstown SD

Printed 12/22/2021 2:49:45 PM

Debt Details
Governmental Funds/ Activities

Debt Category	Debt Issue Date (MM/YYYY)	Principal Amounts Only			Debt at End of Fiscal Year	Current Portion Due Within One Year (Principal and Interest)	Interest Paid During Fiscal Year
		Debt at Beginning of Fiscal Year	Additions	Reductions / Repayments			
General Obligation Bonds/Notes – CIB	06/2020	9,785,000.00		1,100,000.00	8,685,000.00	1,380,000.00	315,840.00
General Obligation Bonds/Notes – CIB	11/2019	9,660,000.00		5,000.00	9,655,000.00	10,000.00	112,106.00
General Obligation Bonds/Notes – CIB	03/2019	7,020,000.00		20,000.00	7,000,000.00	20,000.00	335,064.00
General Obligation Bonds/Notes – CIB	12/2018	8,360,000.00		910,000.00	7,450,000.00	905,000.00	231,250.00
General Obligation Bonds/Notes – CIB	10/2017	3,894.82		3,894.82			2,806.00
General Obligation Bonds/Notes – CIB	12/2016	9,700,000.00		50,000.00	9,650,000.00	95,000.00	227,798.00
General Obligation Bonds/Notes – CIB	11/2002	268,000.00		132,000.00	136,000.00	136,000.00	2,069.00
Compensated Absences		506,558.00	438,814.00	362,830.00	582,542.00		
Other Post-Employment Benefits (OPEB)		11,400,530.00	191,860.00	2,795,419.00	8,796,971.00		
Net Pension Liability		80,804,911.00	10,382,536.00	7,968,962.00	83,218,485.00		
Totals for Debt Entered:		\$137,508,893.82	\$11,013,210.00	\$13,348,105.82	\$135,173,998.00	\$2,546,000.00	\$1,226,933.00

Bond Details
Proprietary Funds

Debt Category	Debt Issue Date (MM/YYYY)	Principal Amounts Only			Debt at End of Fiscal Year	Current Portion Due Within One Year (Principal and Interest)	Interest Paid During Fiscal Year
		Debt at Beginning of Fiscal Year	Additions	Reductions / Repayments			
Compensated Absences		21,497.00	4,221.00	4,582.00	21,136.00		
Other Post-Employment Benefits (OPEB)		257,510.00	5,195.00	24,715.00	237,990.00		
Net Pension Liability		1,953,089.00	145,946.00	183,520.00	1,915,515.00		
Totals for Debt Entered:		\$2,232,096.00	\$155,362.00	\$212,817.00	\$2,174,641.00		

LEA : 123466403 Pottstown SD

Printed 12/22/2021 2:49:49 PM

General Fund (10)

Section 1: Tuition/Purchased Services as Reported within Expenditure Detail

	Amount
Tuition Reported in General Fund Expenditures 1000-560	5,710,954.84
Purchased Services in General Fund Expenditures 1000-594 and 1000-597	886.55
Section 1 Total	\$5,711,841.39

Section 2: Tuition Paid to Institution Types During Fiscal Year

	Tuition Paid For Nonspecial Education	Tuition Paid For Special Education	Total
1 1306 Institutions			
2 Institutionalized Children's Programs			
3 Juveniles Incarcerated in Adult Facilities			
4 Residential Treatment Facilities			
5 Other Local Education Agencies	132,926.31	1,204.51	134,130.82
6 Brick and Mortar Charter Schools	539,890.32	629,475.38	1,169,365.70
7 Cyber Charter Schools	1,285,055.66	1,323,876.25	2,608,931.91
8 Career and Technology Centers			
9 Approved Private Schools		554,187.98	554,187.98
10 PA Chartered Schools for the Deaf and Blind			
11 Private Residential Rehabilitative Institutions			
12 Juvenile Detention Centers			
13 Special Program Jointures			
14 Other Tuition Not Included Elsewhere In This Section	6,941.68	1,238,283.30	1,245,224.98
Section 2 Total	\$1,964,813.97	\$3,747,027.42	\$5,711,841.39

LEA : 123466403 Pottstown SD

Printed 12/22/2021 2:50:08 PM

Food Service / Cafeteria Operations Fund (51)

3000 Operation of Non-Instructional Services

Total

100 Personnel Services – Salaries

100 Personnel Services – Salaries 293,804.03

Total Personnel Services – Salaries \$293,804.03

200 Personnel Services – Employee Benefits

210 Group Insurance – Contracted Provider 165,140.10

220 Social Security Contributions 20,396.91

230 PSERS Retirement Contributions 186,835.41

250 Unemployment Compensation 46,069.99

280 Other Post-Employment Benefits (OPEB) 9,774.00

Total Personnel Services – Employee Benefits \$428,216.41

300 Purchased Professional and Technical Services

390 Other Purchased Professional and Technical Services 432.84

Total Purchased Professional and Technical Services \$432.84

400 Purchased Property Services

410 Cleaning Services 4,695.69

430 Repairs and Maintenance Services 1,295.76

490 Other Purchased Property Services 26,894.38

Total Purchased Property Services \$32,885.83

500 Other Purchased Services

530 Communications 1,339.27

580 Travel 102.35

Total Other Purchased Services \$1,441.62

600 Supplies

610 General Supplies 40,622.06

630 Food 700,197.31

Total Supplies \$740,819.37

700 Property

740 Depreciation 8,090.00

Total Property \$8,090.00

800 Other Objects

810 Dues and Fees 725.98

890 Miscellaneous Expenditures 1,670.22

Total Other Objects \$2,396.20

Total 3000 Operation of Non-Instructional Services \$1,508,086.30

LEA : 123466403 Pottstown SD

Printed 12/22/2021 2:50:08 PM

Food Service / Cafeteria Operations Fund (51)

	<u>Elementary</u>	<u>Secondary</u>	<u>Federal</u>	<u>Total</u>
3100 Food Services				
100 Personnel Services – Salaries				
100 Personnel Services – Salaries				293,804.03
Total Personnel Services – Salaries				\$293,804.03
200 Personnel Services – Employee Benefits				
210 Group Insurance – Contracted Provider				165,140.10
220 Social Security Contributions				20,396.91
230 PSERS Retirement Contributions				186,835.41
250 Unemployment Compensation				46,069.99
280 Other Post-Employment Benefits (OPEB)				9,774.00
Total Personnel Services – Employee Benefits				\$428,216.41
300 Purchased Professional and Technical Services				
390 Other Purchased Professional and Technical Services				432.84
Total Purchased Professional and Technical Services				\$432.84
400 Purchased Property Services				
410 Cleaning Services				4,695.69
430 Repairs and Maintenance Services				1,295.76
490 Other Purchased Property Services				26,894.38
Total Purchased Property Services				\$32,885.83
500 Other Purchased Services				
530 Communications				1,339.27
580 Travel				102.35
Total Other Purchased Services				\$1,441.62
600 Supplies				
610 General Supplies				40,622.06
630 Food				700,197.31
Total Supplies				\$740,819.37
700 Property				
740 Depreciation				8,090.00
Total Property				\$8,090.00
800 Other Objects				
810 Dues and Fees				725.98
890 Miscellaneous Expenditures				1,670.22
Total Other Objects				\$2,396.20
Total 3100 Food Services				\$1,508,086.30

LEA : 123466403 Pottstown SD

Printed 12/22/2021 2:50:11 PM

Food Service / Cafeteria Operations Fund (51)

5000 Other Expenditures and Financing Uses

Total

900 Other Uses of Funds

900 Other Uses of Funds

51,031.73

Total Other Uses of Funds

\$51,031.73

Total 5000 Other Expenditures and Financing Uses

\$51,031.73

LEA : 123466403 Pottstown SD

Printed 12/22/2021 2:50:11 PM

Food Service / Cafeteria Operations Fund (51)

5410 General Fund Intrafund Transfers	<u>Elementary</u>	<u>Secondary</u>	<u>Federal</u>	<u>Total</u>
900 <u>Other Uses of Funds</u>				
900 Other Uses of Funds				51,031.73
Total Other Uses of Funds				\$51,031.73
Total 5410 General Fund Intrafund Transfers				\$51,031.73

Internal Service Fund (60)

2000 Support Services

Total

200 Personnel Services – Employee Benefits

210 Group Insurance – Contracted Provider

5,320,463.00

Total Personnel Services – Employee Benefits

\$5,320,463.00

800 Other Objects

810 Dues and Fees

239,474.00

Total Other Objects

\$239,474.00

Total 2000 Support Services

\$5,559,937.00

Internal Service Fund (60)

2300 Support Services – Administration

Elementary

Secondary

Federal

Total

200 Personnel Services – Employee Benefits

210 Group Insurance – Contracted Provider

5,320,463.00

Total Personnel Services – Employee Benefits

\$5,320,463.00

800 Other Objects

810 Dues and Fees

239,474.00

Total Other Objects

\$239,474.00

Total 2300 Support Services – Administration

\$5,559,937.00

Internal Service Fund (60)

2390 Other Administration Services

Elementary

Secondary

Federal

Total

200 Personnel Services – Employee Benefits

210 Group Insurance – Contracted Provider

5,320,463.00

Total Personnel Services – Employee Benefits

\$5,320,463.00

800 Other Objects

810 Dues and Fees

239,474.00

Total Other Objects

\$239,474.00

Total 2390 Other Administration Services

\$5,559,937.00

	<u>Food Service(51)</u>	<u>Child Care Operations(52)</u>	<u>Other Enterprise(58)</u>	<u>Internal Service(60)</u>	<u>Total</u>
2000 <u>Support Services</u>					
2300 Support Services - Administration				5,559,937.00	5,559,937.00
Total Support Services				\$5,559,937.00	\$5,559,937.00
3000 <u>Operation of Non-Instructional Services</u>					
3100 Food Services	1,508,086.30				1,508,086.30
Total Operation of Non-Instructional Services	\$1,508,086.30				\$1,508,086.30
5000 <u>Other Expenditures and Financing Uses</u>					
5400 Intrafund Transfers Out			51,031.73		51,031.73
Total Other Expenditures and Financing Uses			\$51,031.73		\$51,031.73
TOTAL ACTUAL EXPENDITURES & OTHER FINANCING USES	\$1,559,118.03			\$5,559,937.00	\$7,119,055.03

LEA : 123466403 Pottstown SD

Printed 12/22/2021 2:50:29 PM

Fund	School	School Number	Local Personnel	Local Nonpersonnel	State Personnel	State Nonpersonnel	Federal Personnel	Federal Nonpersonnel	Total	Explanation
10	Barth El Sch	3345	1,748,168.58	316,939.73	1,800,314.00	326,393.60	580,811.01	233,631.21	5,006,258.13	
	Franklin El Sch	3339	1,667,879.07	327,446.72	1,717,629.56	337,214.00	512,252.49	226,691.71	4,789,113.55	
	Lincoln El Sch	3341	1,852,549.68	316,541.28	1,907,808.64	325,983.26	525,719.56	237,459.41	5,166,061.83	
	Pottstown MS	3346	5,192,769.17	1,047,877.99	5,347,662.20	1,079,134.72	901,984.69	678,902.48	14,248,331.25	
	Pottstown SHS	3348	5,428,913.24	1,238,451.87	5,590,850.12	1,275,393.16	482,867.56	669,977.23	14,686,453.18	
	Rupert El Sch	3342	1,678,244.76	315,465.25	1,728,304.45	324,875.14	494,273.74	231,226.75	4,772,390.09	
Total			17,568,524.50	3,562,722.84	18,092,568.97	3,668,993.88	3,497,909.05	2,277,888.79	48,668,608.03	